

Service Manual

Minitrend
Multitrend Plus

v5

Table of Contents

Table of Contents		iii
Chapter 1:	<i>Introduction</i>	1
Chapter 2:	<i>Minitrend V5 Analogue Card Installation</i>	3
	Removing the Rear Panel	3
	Inside the Unit	4
	Standard and Universal Analogue Cards	4
	Removing the Analogue Card	4
	Inserting the Analogue Card	5
	Re-assembling the Unit	5
Chapter 3:	<i>Minitrend V5 Alarm Card Installation</i>	7
	Removing the Rear Panel	7
	Inside the Unit	8
	Alarm Cards	8
	Removing the Alarm Card	8
	Inserting the Alarm Card	9
	Re-assembling the Unit	10
Chapter 4:	<i>Minitrend V5 Power Supply Card & Transmitter Power Supply Card Installation</i>	11
	Removing the Rear Panel	11
	Inside the Unit	12
	Power Supply and Transmitter Power Supply Cards	12
	Removing the Power Supply Card	12
	Inserting the Power Supply Card	13
	Re-assembling the Unit	13

Chapter 5:	<i>Minitrend V5 Retransmission Card Installation</i>	15
	Removing the Rear Panel	15
	Inside the Unit	16
	Retransmission Card	16
	Removing the Retransmission Card	16
	Inserting the Retransmission Card	16
	Re-assembling the Unit.	17
Chapter 6:	<i>Minitrend V5 Communications Card Installation</i>	19
	Removing the Rear Panel	19
	Inside the Unit	20
	Communications and RS485 Cards	20
	Removing the Comms Cards	20
	Inserting the Comms Cards	21
	Re-assembling the Unit	21
	Connection Details	22
	<i>Ethernet Interface</i>	22
	<i>RS232 Interface (Comm2)</i>	22
	<i>RS485 Interface (Comm3 Trendbus)</i>	22
Chapter 7:	<i>Minitrend V5 Processor Card Installation</i>	23
	Removing the Rear Panel	23
	Inside the Unit	24
	Processor Card	24
	Removing the Processor Card.	24
	Inserting the Processor Card	25
	Re-assembling the Unit	25
Chapter 8:	<i>Minitrend V5 PCMCIA Card Installation</i>	27
	Removing the Rear Panel	27
	Inside the Unit	28
	PCMCIA Card	28
	Removing the PCMCIA Card.	28
	Inserting the PCMCIA Card	29
	Re-assembling the Unit	29

Chapter 9:	<i>Minitrend V5 Rear Panel Assembly</i>	31
	Removing the Rear Panel	31
	Replacing the Rear Panel Assembly	32
	Re-assembling the Unit	32
Chapter 10:	<i>Minitrend V5 Disk Drive Replacement</i>	33
	Removing the Rear Panel	33
	Inside the Unit	34
	Disk Drive Replacement	34
	Disk Drive Installation	34
	Re-assembling the Unit	35
Chapter 11:	<i>Minitrend V5 Display Assembly</i>	37
	Display Assembly Replacement	37
Chapter 12:	<i>Multitrend Plus V5 Analogue Card Installation</i>	39
	Removing the Rear Panel	39
	Inside the Unit	40
	Standard and Universal Analogue Cards	40
	Removing the Analogue Card	41
	Inserting the Analogue Card	41
	Re-assembling the Unit	41
Chapter 13:	<i>Multitrend Plus V5 Alarm Card Installation</i>	43
	Removing the Rear Panel	43
	Inside the Unit	44
	Alarm Cards	44
	Removing the Primary Alarm Card in slot D	45
	Inserting the Primary Alarm Card in slot D	45
	Inserting a Second Alarm Card in slot D1	47
	Re-assembling the Unit	47

Chapter 14:	<i>Multitrend Plus V5 Power Supply Card & Transmitter Power Supply Card Installation</i>	49
	Removing the Rear Panel	49
	Inside the Unit	50
	Power Supply and Transmitter Power Supply Card	50
	Installing the Power Supply	51
	Removing the Transmitter Power Supply Card	51
	Inserting the Transmitter Power Supply Card	52
	Re-assembling the Unit	52
Chapter 15:	<i>Multitrend Plus V5 Retransmission Card Installation</i>	53
	Removing the Rear Panel	53
	Inside the Unit	54
	Retransmission Card	54
	Removing the Retransmission Card	55
	Inserting the Retransmission Card	55
	Re-assembling the Unit	55
Chapter 16:	<i>Multitrend Plus V5 Communications Card Installation</i>	57
	Removing the Rear Panel	57
	Inside the Unit	58
	Communications and RS485 Cards	59
	Removing the Comms Cards	59
	Inserting the Comms Cards	60
	Re-assembling the Unit	60
	Connection Details	61
	<i>Ethernet Interface</i>	61
	<i>RS232 Interface (Comm2)</i>	61
	<i>RS485 Interface (Comm3 Trendbus)</i>	61
Chapter 17:	<i>Multitrend Plus V5 Processor Card Installation</i>	63
	Removing the Rear Panel	63
	Inside the Unit	64
	Processor Card	65
	Removing the Processor Card.	65
	Inserting the Processor Card	66

Chapter 18:	<i>Multitrend Plus V5 PCMCIA Card Installation</i>	67
	Removing the Rear Panel	67
	Inside the Unit	68
	PCMCIA Card	69
	Removing the PCMCIA Card.	69
	Inserting the PCMCIA Card	70
	Re-assembling the Unit	70
Chapter 19:	<i>Multitrend Plus V5 Rear Panel Assembly</i>	71
	Removing the Rear Panel	71
	Replacing the Rear Panel Assembly	72
	Re-assembling the Unit	72
Chapter 20:	<i>Multitrend Plus V5 Disk Drive Replacement</i>	73
	Removing the Rear Panel	73
	Disk Drive Replacement	74
	Inside the Unit	74
	Disk Drive Installation	75
	Re-assembling the Unit	75
Index		77

Chapter 1: Introduction

This manual is intended as a guide for the purposes of replacing or installing hardware.

Honeywell Recorders are designed for ease of assembly with minimal disturbance to the rest of the unit.

There are, however, very few user-serviceable components - removing the rear panel and opening the back of the recorder should only be performed under the following circumstances:

- When an item of hardware requires individual replacement.
- When an item of hardware is to be retrospectively fitted.

In all other instances it is recommended that the complete unit be returned for service to an authorised agent or service centre.

Before attempting to strip down a **Honeywell** recorder, it is advisable to clear a sufficient work space so components such as the front panel can be rested on the work surface without getting scratched or damaged.

This document is divided into two halves with separate instructions for the Minitrend V5 and the Multitrend Plus V5



CAUTION

OBSERVE ANTI-STATIC PRECAUTIONS

Refer to BS EN1000151:1992. Basic specification. Protection of electrostatic sensitive devices.

Ensure all power to the recorder is disconnected before attempting all maintenance procedures.

Full anti-static precautions **MUST** be observed when in contact with the electronics of your recorder.

Removal of PCBs and battery back-up will result in the loss of all non-volatile data. Ensure all data and set-ups are saved.

Upon completion of service procedures detailed in this manual two basic safety tests should be performed in order to ensure continued safe operation of the instrument.

1. Earth Resistance; 25 Adc applied between case and protective earth, bonding resistance should be < 0.1 Ohm.
2. Insulation Resistance; 500Vdc applied between the earth terminal, and the live and neutral terminal shorted together, insulation resistance to be >2.0 MOhm.

(Mega Ohm, NOT milli Ohm)

Failure to comply with these instructions may result in product damage.

Chapter 2: Minitrend V5 Analogue Card Installation

Removal of the rear panel (ONLY) is necessary when this operation is intended.

Removing the Rear Panel

CAUTION

OBSERVE ANTI-STATIC PRECAUTIONS

Refer to BS. EN1000151:1992. Basic specification. Protection of electrostatic sensitive devices.

Full anti-static precautions **MUST** be observed when in contact with the electronics within the recorder.

Removal of PCBs and battery back-up will result in the loss of all non volatile data. Ensure all data and set-ups are saved first.

Failure to comply with these instructions may result in product damage.

- To remove the rear panel of the recorder, loosen and remove the four No 6 x ½” self tap screws at each corner of the rear panel, taking care to retain the screws and the shakeproof washers.



FIGURE 2.1
Removing the
rear panel

- If fitted, loosen and remove the mounting clamp screws (M3 x 16mm pan pozi) at the top and bottom of the extrusion to allow removal of the back panel.

NB. Only one of the two screws may have to be removed while loosening the other will be sufficient.

Inside the Unit

DO NOT disconnect any wiring from the mains socket on the rear panel. Gently move the rear panel to the side of the extrusion to allow internal access.

1. Power Supply Card
2. Analogue Card (A)
3. Analogue Card (B)
4. Comms Card (C)
5. Processor Card
6. Alarm Card (D)
7. PCMCIA Card (behind the alarm card)
8. Disk Drive

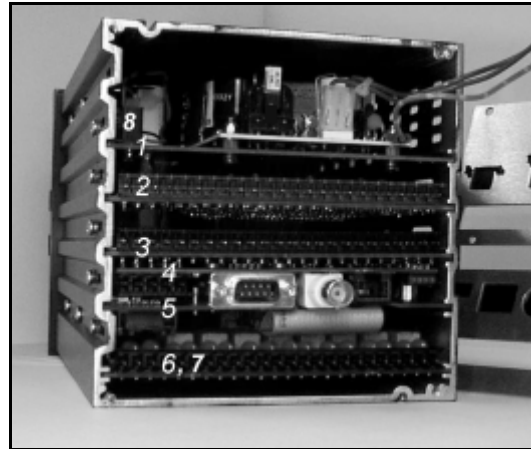


FIGURE 2.2
Position of the internal boards

Standard and Universal Analogue Cards

The mechanical constraints for the standard analogue card and the universal analogue card are the same.

The installation for either of the analogue cards in slot A or slot B positions, follows the same procedure.

The analogue slot A, on the rear panel, is primarily for the standard analogue card and slot B for the universal analogue card. However, either slot can be used for both types of analogue card.

Removing the Analogue Card

- If replacing an analogue card, remove any cards as necessary from slot A or slot B positions. This is done simply by locating the earthing screw on the left side of the unit (looking from the rear). Slot A's earthing screw is second from the top and slot B's earthing screw is third from the top. Remove and retain the screws and washers.
- Grip the front of the card, or by the connector and gently pull to release the card from its connection to the mother board at the front of the unit.

Inserting the Analogue Card

- Slide the new analogue card carefully back along the extrusion, until the earth fixing bracket on the left side of the analogue card is in line with the single fixing hole on the side of the extrusion.
- The analogue card will locate into a mating connector in the mother board at the front of the unit.
- Ensure the card is pushed fully home and that no internal wiring is damaged as the analogue card is returned.
- Replace/fit the earth screw and shakeproof washer, on the side of the extrusion, torque to 120cNm or 10.62lbf-in.

Re-assembling the Unit

- Remove the plastic blanking plate safety cover for the appropriate slot on the rear panel, if necessary, by pushing out the push rivets from behind.
- Replace the rear panel, reposition the shakeproof washers and replace and tighten the four No. 6 x 1/2" self tap screws at each corner of the rear panel.
- Replace and/or tighten the mounting clamp screws at the top and bottom of the extrusion.



FIGURE 2.3 The Earthing Screws

Chapter 3: Minitrend V5 Alarm Card Installation

Removal of the rear panel (ONLY) is necessary when this operation is intended.

Removing the Rear Panel



CAUTION

OBSERVE ANTI-STATIC PRECAUTIONS

Refer to BS EN1000151:1992. Basic specification. Protection of electrostatic sensitive devices.

Full anti-static precautions MUST be observed when in contact with the electronics within the recorder.

Removal of PCBs and battery back-up will result in the loss of all non volatile data. Ensure all data and set-ups are saved first.

Failure to comply with these instructions may result in product damage.

- To remove the rear panel of the recorder, loosen and remove the four No 6 x ½” self tap screws at each corner of the rear panel, taking care to retain both the shake-proof washer and the screw.

FIGURE 3.1
Removing the rear panel



- If fitted, loosen and remove the mounting clamp screws (M3 x 16mm pan pozi) at the top and bottom of the extrusion to allow removal of the back panel.

NB. Only one of the two screws may have to be removed while loosening the other will be sufficient.

Inside the Unit

DO NOT disconnect any wiring from the mains socket on the rear panel. Gently move the rear panel to the side of the extrusion to allow internal access.

1.	Power Supply Card
2.	Analogue Card (A)
3.	Analogue Card (B)
4.	Comms Card (C)
5.	Processor Card
6.	Alarm Card (D)
7.	PCMCIA Card (behind the alarm card)
8.	Disk Drive

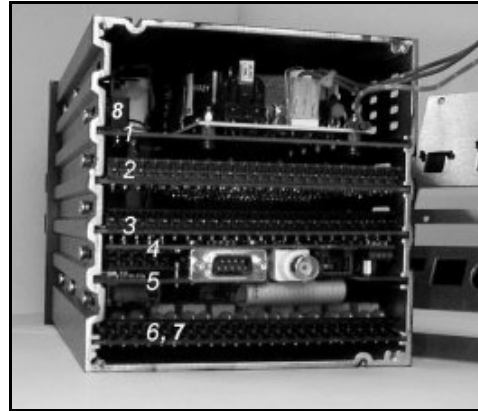


FIGURE 3.2
Position of the internal boards

Alarm Cards

There are two main types of alarm cards, the relay alarm card and the input/output card.

For the *Minitrend V5*, the relay alarm card is available with 4 or 8 channels of relay output, the 8 channel having two channels of digital input as standard.

The input/output cards for the *Minitrend V5* are available with 8 or 16 channels, all channels may be used as digital inputs.

All alarm cards take up position in slot D on the rear panel of the *Minitrend V5*.

If the unit is not fitted with a PCMCIA card in the alarm slot D, a snubber card will be required.

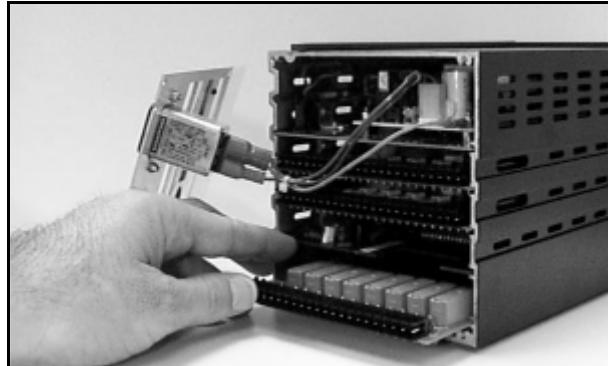
Removing the Alarm Card

It is necessary to access the processor card to connect one end of the alarm ribbon cable to the socket on the under side of the card.

- Locate the earth bracket screw, for the processor card, on the left side of the unit (from the rear), second position from the bottom of the unit (Slot C). Remove and retain the screw and shakeproof washer.
- If the alarm card is being replaced, locate and remove the earthing screw from the bottom position of the unit (Slot D). Remove the card and retain both the screw and the shakeproof washer.
- Grip the front of the processor card, or by the connector and gently pull to release the card from its connection to the mother board at the front of the unit.

- Remove the alarm card at the same time.

FIGURE 3.3
Alarm card



- Slide the processor board out to reveal a 34-way connector on the under side of the card.
- Remove the connector if replacing an alarm card.
- Plug one end of the new alarm ribbon cable into the connector on the processor card. **NB.** Both ends of the ribbon cable are identical. The connector will only fit in one way round, identified by a location tab at one side of the connector. Push the connectors fully into the socket on the card.
- Connect the other end of the ribbon cable in to the 34-way connector on the alarm card.

Inserting the Alarm Card

- Fit a snubber card into alarm slot D, if a PCMCIA card is *not* fitted.
- Begin to slide the processor card back into its slot holding the alarm card parallel below, allowing the ribbon cable to bend into a comfortable 'S' shape. [See Figure 3.4 on page 9.](#)
- Both the cards need to be inserted simultaneously to keep the ribbon cable in its folded 'S' shape position.
- Slide the cards carefully back into the extrusion, until the fixing bracket on the left side of both cards are in line with the single fixing hole on the side of the extrusion.
- Ensure that no internal wiring is damaged as the alarm card is returned.
- The processor card will locate into a mating connector in the mother board at the front of the unit.
- Ensure the card is pushed fully home.

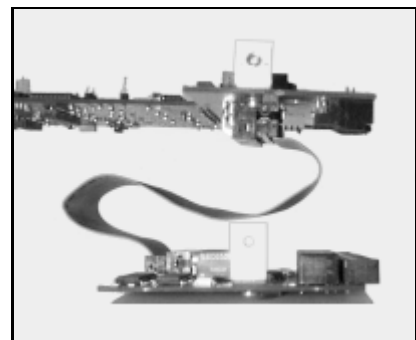


FIGURE 3.4 Alarm Ribbon Cable

- Replace/fit the earth screws and shakeproof washers, on the side of the extrusion, to secure both cards. Torque to 120cNm or 10.62lbf-in.



FIGURE 3.5 The Earthing Screws

Re-assembling the Unit

- Remove the plastic blanking plate safety cover on the bottom of the rear panel by pushing out the push rivets (if adding the alarm card as a new option card).
- Replace the rear panel, reposition the shakeproof washers and replace and tighten the four No 6 x ½" self tap screws at each corner of the rear panel.
- Replace and/or tighten the mounting clamp screws at the top and bottom of the extrusion.

Chapter 4: Minitrend V5 Power Supply Card & Transmitter Power Supply Card Installation

Removal of the rear panel (ONLY) is necessary when this operation is intended.

Removing the Rear Panel

CAUTION

OBSERVE ANTI-STATIC PRECAUTIONS

Refer to BS EN1000151:1992. Basic specification. Protection of electrostatic sensitive devices.

Full anti-static precautions **MUST** be observed when in contact with the electronics within the recorder.

Removal of PCBs and battery back-up will result in the loss of all non volatile data. Ensure all data and set-ups are saved first.

Failure to comply with these instructions may result in product damage.

- To remove the rear panel of the recorder, loosen and remove the four No 6 x ½” self tap screws at each corner of the rear panel, taking care to retain the screws and shakeproof washers.

FIGURE 4.1.
Removing
the rear
panel



- If fitted, loosen and remove the mounting clamp screws (M3 x 16mm pan pozi) at the top and bottom of the extrusion to allow removal of the back panel.

NB Only one of the two screws may have to be removed while loosening the other will be sufficient.

Inside the Unit

DO NOT disconnect any wiring from the mains socket on the rear panel. Gently move the rear panel to the side of the extrusion to allow internal access.

1.	Power Supply Card
2.	Analogue Card (A)
3.	Analogue Card (B)
4.	Comms Card (C)
5.	Processor Card
6.	Alarm Card (D)
7.	PCMCIA Card (behind the alarm card)
8.	Disk Drive

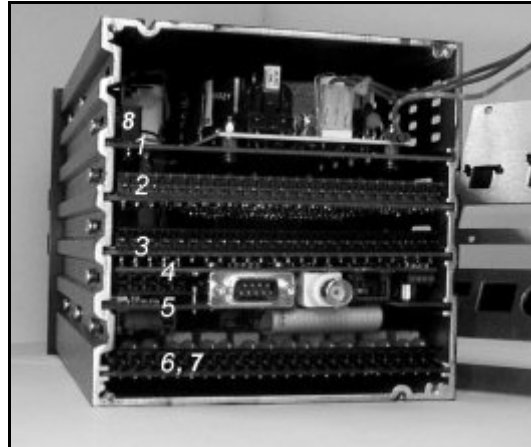


FIGURE 4.2
Position of the internal boards

Power Supply and Transmitter Power Supply Cards

The power supply card is available as 240 Vac, 24 Vdc or 48 Vdc.

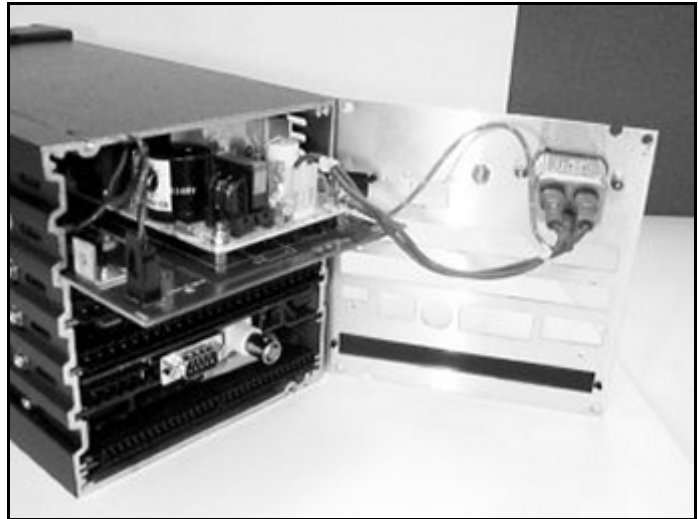
The installation for either of the power supply or the transmitter power supply cards in the top slot position, follows the same procedure.

The transmitter power supply card requires the top right blanking plate on the rear panel to be removed to allow for connection.

Removing the Power Supply Card

- If replacing the power supply card, remove the existing card by locating the earthing screw on the left side of the unit (looking from the rear). The top earthing screw is for the power supply card.
- Grip the front of the card and gently pull to release the card from its connection to the mother board at the front of the unit. Slide the power supply card out about 30mm.
- Disconnect the 2-way disk drive loom on the left side of the card (one red and one black wire).
- From the piggy-back board mounted on the power supply card, disconnect the 3-way mains loom going to the live and neutral connections (only two wires, blue and brown).
- Finally disconnect the earth lead from the mains filter on the rear panel (green/yellow wire).
- The card can now be removed from the unit. [See Figure 4.3 on page 13.](#)

FIGURE 4.3
Power
supply card



Inserting the Power Supply Card

- Slide the power supply card carefully along the extrusion, leaving about 30mm of card protruding from the unit. Reconnect 2-way disk drive loom to the power supply card and the 3-way mains filter loom from the rear panel to the live /neutral connection on the power supply card.
- The new power supply card will be supplied with an earth lead to be connected to the mains filter on the rear panel.
- The power supply card can now be fully inserted into the unit until the earth fixing bracket on the left side of the power supply card is in line with the single fixing hole on the side of the extrusion. The power supply card will locate into a mating connector on the mother board at the front of the unit.
- Ensure the card is pushed fully home and that no internal wiring is damaged as the power supply card is returned.
- Replace/fit the earth screw and shakeproof washer on the side of the extrusion, torque to 120cNm or 10.62lbf-in.

Re-assembling the Unit

- Replace the rear panel, reposition the shakeproof washers and replace and tighten the four No. 6 x ½” self tap screws at each corner of the rear panel.
- Replace and/or tighten the mounting clamp screws at the top and bottom of the extrusion.



FIGURE 4.4 The Earthing Screw

Chapter 5: Minitrend V5 Retransmission Card Installation

Removal of the rear panel (ONLY) is necessary when this operation is intended.

Removing the Rear Panel

CAUTION

OBSERVE ANTI-STATIC PRECAUTIONS

Refer to BS EN1000151:1992. Basic specification. Protection of electrostatic sensitive devices.

Full anti-static precautions **MUST** be observed when in contact with the electronics within the recorder.

Removal of PCBs and battery back-up will result in the loss of all non volatile data. Ensure all data and set-ups are saved first.

Failure to comply with these instructions may result in product damage.

- To remove the rear panel of the recorder, loosen and remove the four No 6 x ½" self tap screws at each corner of the rear panel, taking care to retain the shakeproof washer under each screw head.

FIGURE 5.1
Removing the
rear panel



- If fitted, loosen and remove the mounting clamp screws (M3 x 16mm pan pozi) at the top and bottom of the extrusion to allow removal of the back panel.

NB. Only one of the two screws may have to be removed while loosening the other will be sufficient.

Inside the Unit

DO NOT disconnect any wiring from the mains socket on the rear panel. Gently move the rear panel to the side of the extrusion to allow internal access.

1.	Power Supply Card
2.	Analogue Card (A)
3.	Analogue Card (B)
4.	Comms Card (C)
5.	Processor Card
6.	Alarm Card (D)
7.	PCMCIA Card (behind the alarm card)
8.	Disk Drive

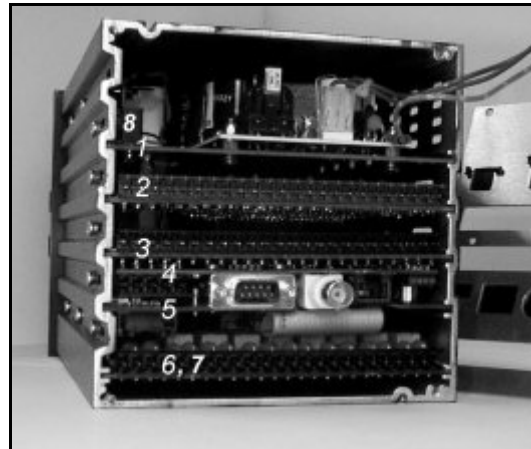


FIGURE 5.2
Position of the internal boards

Retransmission Card

There are two types of retransmission cards one has two channels of retransmission and the other has 4 channels.

The retransmission card usually fits into slot B, on the rear panel, with an analogue card in slot A, however either or both analogue slots can be used for retransmission.

Removing the Retransmission Card

- If replacing a retransmission card, remove any cards as necessary from either slot A or slot B positions, slot B is preferred. This is done simply by locating the earthing screw on the left side of the unit (looking from the rear). Slot A's earthing screw is second from the top and slot B's earthing screw is third from the top.
- Grip the front of the card, or by the connector and gently pull to release card from its connection to the mother board at the front of the unit.

Inserting the Retransmission Card

- Slide the retransmission card carefully back along the extrusion, until the earth fixing bracket on the left side of the retransmission card is in line with the single fixing hole on the side of the extrusion.
- The retransmission card will locate into a mating connector in the mother board at the front of the unit.

- Ensure the card is pushed fully home and that no internal wiring is damaged as the retransmission card is returned.
- Replace/fit the earth screw and shakeproof washer on the side of the extrusion, torque to 120cNm or 10.62lbf-in.

Re-assembling the Unit.

- Remove the plastic blanking plate safety cover for the appropriate slot on the rear panel, if necessary, by pushing out the push rivets from behind.
- Replace the rear panel, reposition the shakeproof washers and replace and tighten the four No. 6 x 1/2" self tap screws at each corner of the rear panel.
- Replace and/or tighten the mounting clamp screws at the top and bottom of the extrusion.



FIGURE 5.3 The Earthing Screw

Chapter 6: Minitrend V5 Communications Card Installation

Removal of the rear panel (ONLY) is necessary when this operation is intended.

Removing the Rear Panel



CAUTION

OBSERVE ANTI-STATIC PRECAUTIONS

Refer to BS EN1000151:1992. Basic specification. Protection of electrostatic sensitive devices.

Full anti-static precautions **MUST** be observed when in contact with the electronics within the recorder.

Removal of PCBs and battery back-up will result in the loss of all non volatile data. Ensure all data and set-ups are saved first.

Failure to comply with these instructions may result in product damage.

- To remove the rear panel of the recorder, loosen and remove the four No 6 x ½” self tap screws at each corner of the rear panel, taking care to retain the screws and shakeproof washers.

FIGURE 6.1
Removing the
rear panel



- If fitted, loosen and remove the mounting clamp screws (M3 x 16mm pan pozi) at the top and bottom of the extrusion to allow removal of the back panel.

NB. Only one of the two screws may have to be removed while loosening the other will be sufficient.

Inside the Unit

DO NOT disconnect any wiring from the mains socket on the rear panel. Gently move the rear panel to the side of the extrusion to allow internal access.

1.	Power Supply Card
2.	Analogue Card (A)
3.	Analogue Card (B)
4.	Comms Card (C)
5.	Processor Card
6.	Alarm Card (D)
7.	PCMCIA Card (behind the alarm card)
8.	Disk Drive

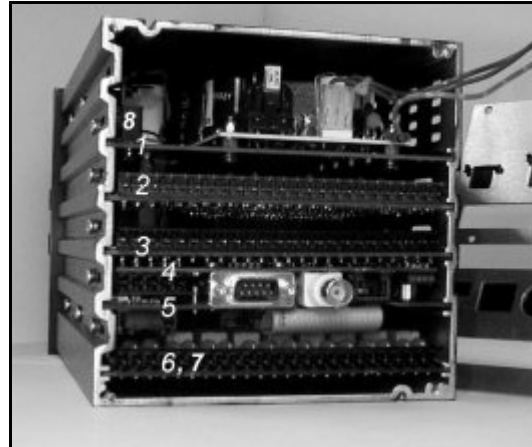


FIGURE 6.2
Position of the internal boards

Communications and RS485 Cards

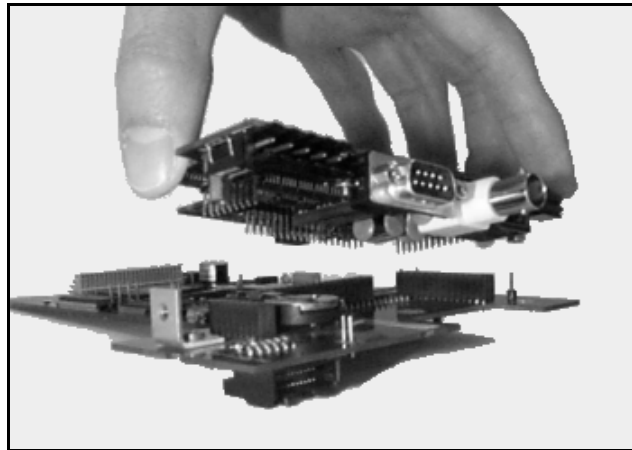
The mechanical constraints for the communications card and the RS485 comms card are the same.

The comms cards plug in on top of the processor card, like a piggy back board, which occupies slot C.

Removing the Comms Cards

- If replacing a comms card, it is necessary to partially slide out the processor card to unplug the comms card. This is done simply by locating the earthing screw on the left side of the unit (looking from the rear). Slot C earthing screw is second from the bottom, remove and retain screw and shakeproof washer.
- Grip the front of the processor card, or by the connector, and gently pull to release the card from its connection to the mother board.
- Begin to slide the card out. If an alarm card is also fitted, a 34-way connector on the underside of the processor card will have to be disconnected in order to slide the processor card out further.
- Pull out the processor card, with the comms card attached, and turn it over to show the underside of the processor card. Remove the two screws and shakeproof washers from the two pillars connecting the two cards together, from the underside of the processor card.
- Carefully separate the comms card from the processor card. **TIP** Pull the cards apart evenly from each side. There are three double row headers in different orientations resulting in quite a tight fit. See [Figure 6.3 on page 21](#).

FIGURE 6.3
The comms card
plugs in on top of
the processor card



Inserting the Comms Cards

- Plug in the new comms card to the processor card and replace the two screws and shakeproof washers on the underside of the processor card to secure the pillars, locking the two cards together.
- Begin to slide the processor card back into the extrusion. If an alarm card is fitted, ensure the ribbon cable is reconnected to the underside of the processor card and kept flat to the alarm card.
- Insert the processor card fully until the earth fixing bracket on the left side of the processor card is in line with the single fixing hole on the side of the extrusion.
- The processor card will locate into a mating connector in the mother board at the front of the unit.
- Ensure the card is pushed fully home and that no internal wiring is damaged as the alarm card is returned.
- Replace/fit the earth screw and shakeproof washer on the side of the extrusion, torque to 120cNm or 10.62lbf-in.

Re-assembling the Unit

- Remove the plastic blanking plate safety cover for the appropriate slot on the rear panel, if necessary, by pushing out the push rivets from behind.
- Replace the rear panel, reposition the shakeproof washers and replace and tighten the four No. 6 x ½" self tap screws at each corner of the rear panel.
- Replace and/or tighten the mounting clamp screws at the top and bottom of the extrusion.
- If fitted, replace and tighten the mounting clamp screws at the top and bottom of the extrusion.

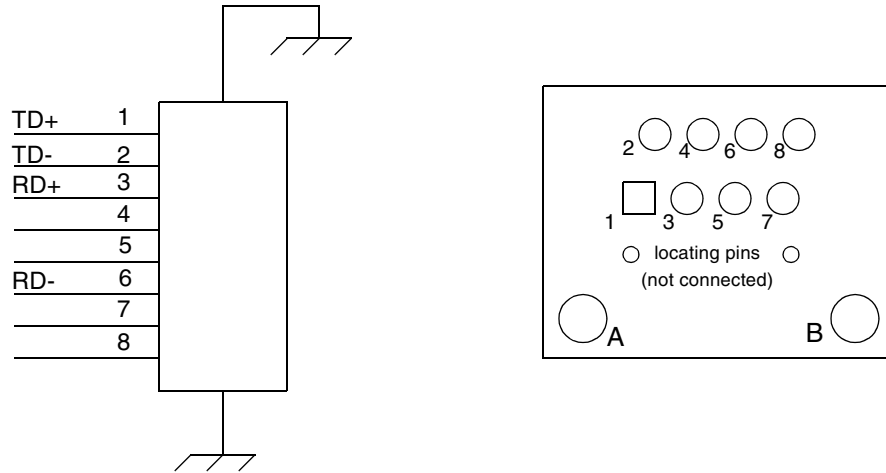


FIGURE 6.4 The Earthing Screw

Connection Details

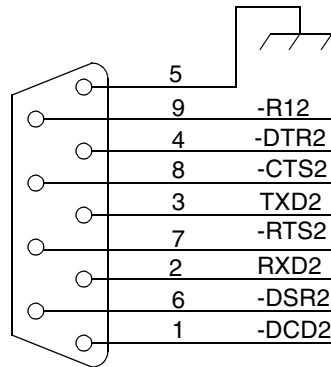
Ethernet Interface

This is an 8-way RL45 socket Molex 95040-288" used for Ethernet connection, pcb position J5. Standard Ethernet connection.



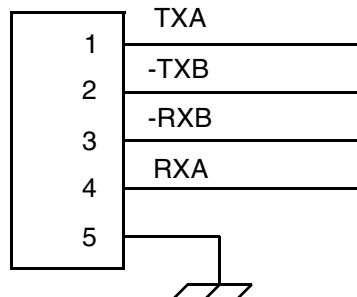
RS232 Interface (Comm2)

This is a 9-way D-type connector (mating half not supplied), pcb position P1.



RS485 Interface (Comm3 Trendbus)

This is a 5-way socket (mating half supplied), pcb position J1.



Chapter 7: Minitrend V5 Processor Card Installation

Removal of the rear panel (ONLY) is necessary when this operation is intended.

Removing the Rear Panel

CAUTION

OBSERVE ANTI-STATIC PRECAUTIONS

Refer to BS EN1000151:1992. Basic specification. Protection of electrostatic sensitive devices.

Full anti-static precautions **MUST** be observed when in contact with the electronics within the recorder.

Removal of PCBs and battery back-up will result in the loss of all non volatile data. Ensure all data and set-ups are saved first.

Failure to comply with these instructions may result in product damage.

- To remove the rear panel of the recorder, loosen and remove the four No 6 x ½” self tap screws at each corner of the rear panel, taking care to retain the screws and shakeproof washers.

FIGURE 7.1
Removing the rear panel



- If fitted, loosen and remove the mounting clamp screws (M3 x 16mm pan pozi) at the top and bottom of the extrusion to allow removal of the back panel.

NB. Only one of the two screws may have to be removed while loosening the other will be sufficient.

Inside the Unit

DO NOT disconnect any wiring from the mains socket on the rear panel. Gently move the rear panel to the side of the extrusion to allow internal access.

1.	Power Supply Card
2.	Analogue Card (A)
3.	Analogue Card (B)
4.	Comms Card (C)
5.	Processor Card
6.	Alarm Card (D)
7.	PCMCIA Card (behind the alarm card)
8.	Disk Drive

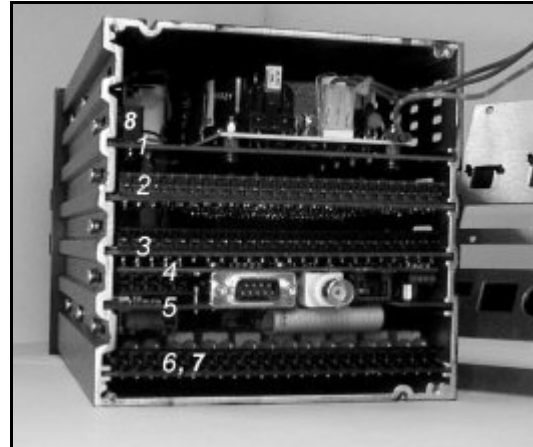


FIGURE 7.2
Position of the internal boards

Processor Card

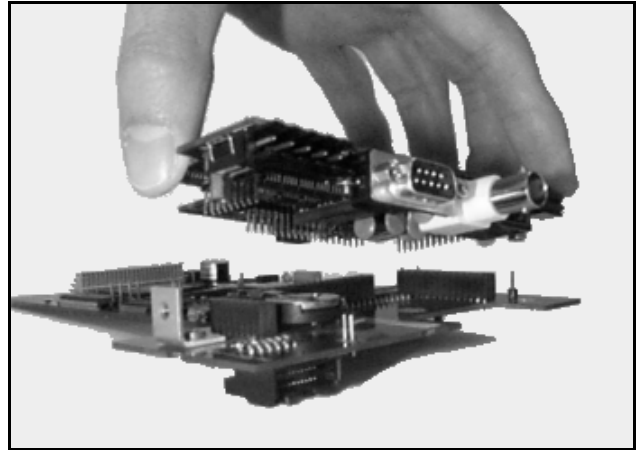
The processor card is not an options card and is fitted in all units.

The processor card occupies slot C on the back of the unit.

Removing the Processor Card.

- If replacing a processor card, remove any cards as necessary from the slot C position. This is done by locating the earthing screw on the left side of the unit (looking from the rear). Slot C's earthing screw is second from the bottom. Remove and retain the screws and shakeproof washers.
- Grip the front of the card, or by the connector, and gently pull to release the card from its connection to the mother board at the front of the unit.
- If there is an alarm card fitted in the slot below (slot D), there will be a 34-way connector attached to the underside of the processor card, this must be disconnected before the processor card can be removed.
- If there is a comms card fitted, this will be a separate card plugged into the top of the processor card, it will need to be removed from the processor card. To do this pull the cards out and turn them over to show the underside of the processor card. Remove the two screws and shakeproof washers from the two pillars connecting the two cards together, from the underside of the processor card.
- Carefully separate the comms card from the processor card. Begin to pull the two boards apart rotating them 90° each time. There are three double row headers in different orientations, therefore pulling from alternate side will ease the process. [See Figure 7.3 on page 25.](#)

FIGURE 7.3
The comms card
plugs in on top of the
processor card



Inserting the Processor Card

- Plug in the comms card, if fitted, to the processor card and replace the two screws and shakeproof washers on the underside of the processor card to secure the pillars, locking the two cards together.
- Begin to slide the processor card carefully back into the extrusion. If an alarm card is fitted, ensure the ribbon cable is kept flat to the alarm card. Slide the processor card in and reconnect the ribbon cable to the connector on the underside of the processor card.
- Insert the processor card fully until the earth fixing bracket on the left side of the processor card is in line with the single fixing hole on the side of the extrusion.
- The processor card will locate into a mating connector on the mother board at the front of the unit.
- Ensure the card is pushed fully home and that no internal wiring is damaged as the alarm card is returned.
- Replace/fit the earth screw and shakeproof washer on the side of the extrusion, torque to 120cNm or 10.62lbf-in.

Re-assembling the Unit

- Remove the plastic blanking plate safety cover for the appropriate slot on the rear panel, if necessary, by pushing out the push rivets from behind.
- Replace the rear panel, reposition the shakeproof washers and replace and tighten the four No. 6 x 1/2" self tap screws at each corner of the rear panel.
- Replace and/or tighten the mounting clamp screws at the top and bottom of the extrusion.



FIGURE 7.4 The Earthing Screw

Chapter 8: Minitrend V5 PCMCIA Card Installation

Removal of the rear panel (ONLY) is necessary when this operation is intended.

Removing the Rear Panel

CAUTION

OBSERVE ANTI-STATIC PRECAUTIONS

Refer to BS EN1000151:1992. Basic specification. Protection of electrostatic sensitive devices.

Full anti-static precautions **MUST** be observed when in contact with the electronics within the recorder.

Removal of PCBs and battery back-up will result in the loss of all non volatile data. Ensure all data and set-ups are saved first.

Failure to comply with these instructions may result in product damage.

- To remove the rear panel of the recorder, loosen and remove the four No 6 x ½" self tap screws at each corner of the rear panel, taking care to retain the screws and shakeproof washers.



FIGURE 8.1
Removing the
rear panel

- If fitted, loosen and remove the mounting clamp screws (M3 x 16mm pan pozi) at the top and bottom of the extrusion to allow removal of the back panel.

NB. Only one of the two screws may have to be removed while loosening the other will be sufficient.

Inside the Unit

DO NOT disconnect any wiring from the mains socket on the rear panel. Gently move the rear panel to the side of the extrusion to allow internal access.

1.	Power Supply Card
2.	Analogue Card (A)
3.	Analogue Card (B)
4.	Comms Card (C)
5.	Processor Card
6.	Alarm Card (D)
7.	PCMCIA Card (behind the alarm card)
8.	Disk Drive

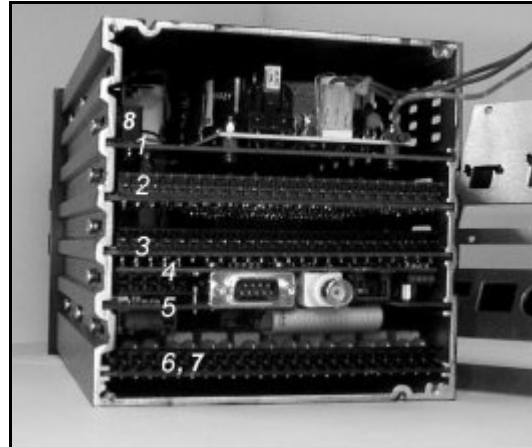


FIGURE 8.2
Position of the internal boards

PCMCIA Card

The PCMCIA card, know as the PC card, is an extra memory card option which can be used as a hard drive.

The PC card is plugged into the processor card which occupies slot C.

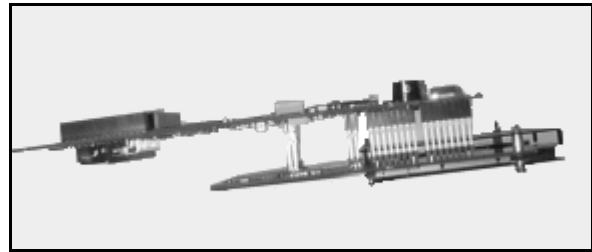
The PC card goes into the area behind the alarm card (if fitted) in slot D.

Removing the PCMCIA Card.

- If replacing a PC card, remove any cards as necessary (e.g. an alarm card) from the slot D position. This is done by locating the earthing screw on the left side of the unit (looking from the rear). Slot D's earthing screw is at the bottom. Remove and retain the screw and shakeproof washer.
- If there is an alarm card in slot D it will be attached to the processor card via a 34-way ribbon cable connector, this can be left connected.
- It is necessary to remove the processor card in slot C at the same time. This is done by locating and removing the earthing screw from slot C, which is second from the bottom of the unit.
- Grip the front of the processor card, or by the connector, and gently pull to release the card from its connection to the mother board.

- If there is a comms card fitted, this will be a separate card plugged into the top of the processor card, this is not affected.

FIGURE 8.3
PCMCIA card plugs in
under the processor card



Inserting the PCMCIA Card

- Plug in the PC card into the under side of the processor card and ensure all four headers are pushed fully home.
- Begin to slide the PC card back along the board guides of slot D. The processor card will then locate along the board guides for slot C.
- If an alarm card is fitted, begin to slide it in after the PC card, keeping the ribbon cable flat to the alarm card.
- All the boards should slide in together with the processor card locating into a mating connector on the mother board at the front of the unit.
- Insert the processor card fully until the fixing bracket on the left side of the processor card is in line with the single fixing hole on the side of the unit. Line up the alarm card and replace the earthing screw in the same way.
- Ensure the cards is pushed fully home and that no internal wiring is damaged as the cards are returned.
- Replace the earth screw and toothed washer on the side of the extrusion, torque to 120cNm or 10.62lbf-in.

Re-assembling the Unit

- Replace the rear panel, reposition the shakeproof washers and replace and tighten the four No. 6 x 1/2" self tap screws at each corner of the rear panel.
- Replace and/or tighten the mounting clamp screws at the top and bottom of the extrusion.



FIGURE 8.4 The Earthing Screw

Chapter 9: Minitrend V5 Rear Panel Assembly

Removing the Rear Panel

Removal of the rear panel is necessary for replacement or fitting any of the PC cards.

CAUTION

OBSERVE ANTI-STATIC PRECAUTIONS

Refer to BS EN1000151:1992. Basic specification. Protection of electrostatic sensitive devices.

Full anti-static precautions **MUST** be observed when in contact with the electronics within the recorder.

Removal of PCBs and battery back-up will result in the loss of all non volatile data. Ensure all data and set-ups are saved first.

Failure to comply with these instructions may result in product damage.

- To remove the rear panel of the recorder, loosen and remove the four No 6 x ½” self tap screws at each corner of the rear panel, taking care to retain the screws and shakeproof washers.

FIGURE 9.1
Removing the
rear panel



- If fitted, loosen and remove the mounting clamp screws (M3 x 16mm pan pozi) at the top and bottom of the extrusion to allow removal of the back panel.

NB. Only one of the two screws may have to be removed while loosening the other will be sufficient.

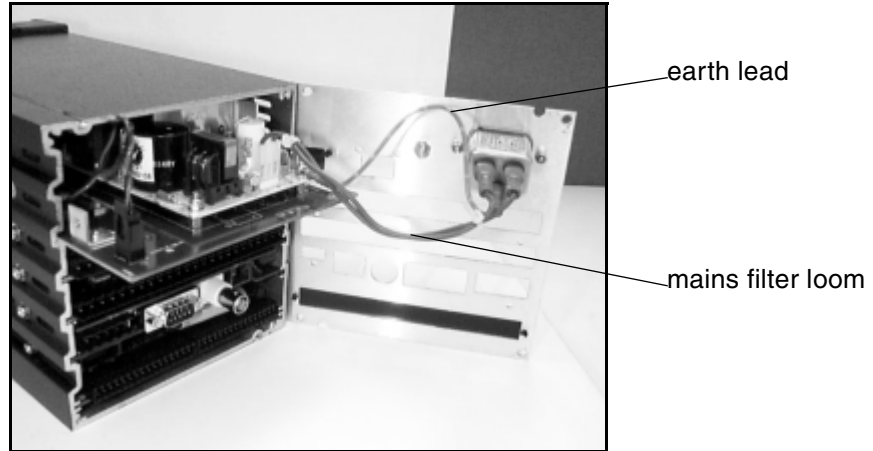


FIGURE 9.2
Power supply card and rear panel assembly connections

Replacing the Rear Panel Assembly

- Remove, from the power supply card, the 3-way mains filter loom connecting the live and neutral wires from the rear panel assembly (two wire, one brown and one blue).
- Disconnect the earth lead from the mains filter on the rear panel assembly (green/yellow wire).
- Connect the 3-way mains filter loom from the new rear panel assembly to the power supply card.
- Connect the earth lead from the power supply card on to the new rear panel assembly.

Re-assembling the Unit

- Remove any plastic blanking plate safety covers for the appropriate slots on the rear panel, if necessary, by pushing out the push rivets from behind.
- Replace the rear panel, reposition the toothed washers and replace and tighten the four No6 x 1/2" self tap screws at each corner of the rear panel.
- Replace and/or tighten the mounting clamp screws at the top and bottom of the extrusion.

Chapter 10: Minitrend V5 Disk Drive Replacement

Removal of the rear panel (ONLY) is necessary when this operation is intended.

Removing the Rear Panel



CAUTION

OBSERVE ANTI-STATIC PRECAUTIONS

Refer to BS EN1000151:1992. Basic specification. Protection of electrostatic sensitive devices.

Full anti-static precautions MUST be observed when in contact with the electronics within the recorder.

Removal of PCBs and battery back-up will result in the loss of all non volatile data. Ensure all data and set-ups are saved first.

Failure to comply with these instructions may result in product damage.

- To remove the rear panel of the recorder, loosen and remove the four No 6 x ½” self tap screws at each corner of the rear panel, taking care to retain the screws and shakeproof washers.

FIGURE 10.1
Removing the
rear panel



- If fitted, loosen and remove the mounting clamp screws (M3 x 16mm pan pozi) at the top and bottom of the extrusion to allow removal of the back panel.

NB. Only one of the two screws may have to be removed while loosening the other will be sufficient.

Inside the Unit

DO NOT disconnect any wiring from the mains socket on the rear panel. Gently move the rear panel to the side of the extrusion to allow internal access.

1.	Power Supply Card
2.	Analogue Card (A)
3.	Analogue Card (B)
4.	Comms Card (C)
5.	Processor Card
6.	Alarm Card (D)
7.	PCMCIA Card (behind the alarm card)
8.	Disk Drive

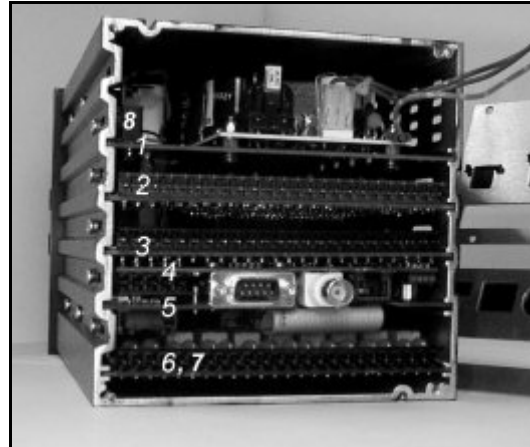


FIGURE 10.2
Position of the internal boards

Disk Drive Replacement

Before the disk drive can be accessed it is necessary to remove all the cards from the unit.

The top card is the power supply card, this is attached to the rear panel and can be removed and replaced. See [“Minitrend V5 Power Supply Card & Transmitter Power Supply Card Installation”](#) on page 11.

Slots A and B are for the analogue cards, standard or universal, these can be removed and replaced following the instructions on [“Minitrend V5 Analogue Card Installation”](#) on page 3.

Slot C is occupied by the processor card and possibly a comms card. For removal and replacement of these cards see [“Minitrend V5 Processor Card Installation”](#) on page 23. See also [“Minitrend V5 Communications Card Installation”](#) on page 19.

Remove any cards from slot D, these may be an alarm card and/or a PCMCIA memory card. See [“Minitrend V5 Alarm Card Installation”](#) on page 7 and [“Minitrend V5 PCMCIA Card Installation”](#) on page 27.

Disk Drive Installation

- Remove all the cards from slots A, B, C, D, and the power supply card from the top slot. Disconnect the 2-way disk drive power lead (red and black) from the power supply card.
- Remove power supply and signal loom from disk drive.
- Unscrew the four fixing screws from the left side of the unit, remove and retain the screws and remove the disk drive.

- Position the new disk drive over the mounting holes and replace using the original screws.
- Fit power supply and signal leads to new disk drive.
- Reconnect the disk drive power lead to the power supply card.
- Replace the power supply card in to the top slot.
- Replace the analogue cards in slot A or B or both.
- Replace the processor card in slot C.
- Replace any cards in slot D.

Re-assembling the Unit

- Replace the rear panel, reposition the shakeproof washers and replace and tighten the four No 6 x ½" self tap screws at each corner of the rear panel.
- Replace and/or tighten the mounting clamp screws at the top and bottom of the extrusion.

Chapter 11: Minitrend V5 Display Assembly

Display Assembly Replacement

The display assembly comprises of the front surround, complete with keypad and encoder assembly, and the 5.5" LCD display.

This is the whole front section of the unit which hinges open to reveal the disk drive.

CAUTION

OBSERVE ANTI-STATIC PRECAUTIONS

Refer to BS EN1000151:1992. Basic specification. Protection of electrostatic sensitive devices.

Full anti-static precautions **MUST** be observed when in contact with the electronics within the recorder.

Removal of PCBs and battery back-up will result in the loss of all non volatile data. Ensure all data and set-ups are saved first.

Failure to comply with these instructions may result in product damage.

- To remove the display assembly, carefully lift the corner hinges outwards one by one, to free the hinge pins and release the display.
- Unplug the cable from the well at the front of the main unit.
- Attach the new display assembly to the corner hinges and reconnect the cable. Ensure the cable is connected correctly.

NB: Should the display not work, first check the connector has been plugged in accurately.



FIGURE 11.1
Display
assembly

Chapter 12: Multitrend Plus V5 Analogue Card Installation

Removal of the rear panel (ONLY) is necessary when this operation is intended.

Removing the Rear Panel

CAUTION

OBSERVE ANTI-STATIC PRECAUTIONS

Refer to BS EN1000151:1992. Basic specification. Protection of electrostatic sensitive devices.

Full anti-static precautions **MUST** be observed when in contact with the electronics within the recorder.

Removal of PCBs and battery back-up will result in the loss of all non volatile data. Ensure all data and set-ups are saved first.

Failure to comply with these instructions may result in product damage.

- To remove the rear panel of the recorder, loosen and remove the four M4 x 8mm self tap screws at each corner of the rear panel, taking care to retain the screws and shakeproof washers.

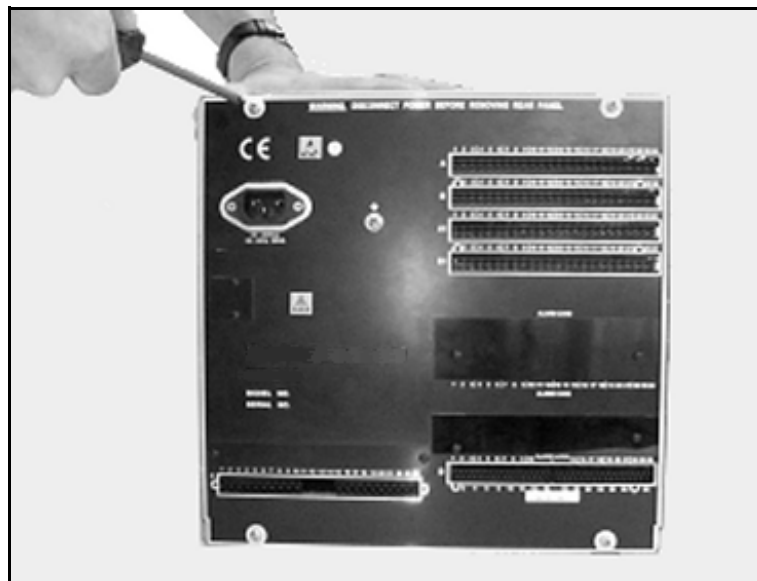


FIGURE 12.1 Removing the rear panel

Inside the Unit

DO NOT disconnect any wiring from the mains socket on the rear panel. Gently move the rear panel to the side of the extrusion to allow internal access.

1.	Analogue Card (A)
2.	Analogue Card (B)
3.	Analogue Card (A1)
4.	Analogue Card (B1)
5.	Comms Card (C)
6.	Processor Card (C)
7.	PCMCIA Card (D) (behind the alarm card)
8.	Alarm Card
9.	Transmitter Power Supply Card
10.	Mother Board
11.	Power Supply
12.	Disk Drive

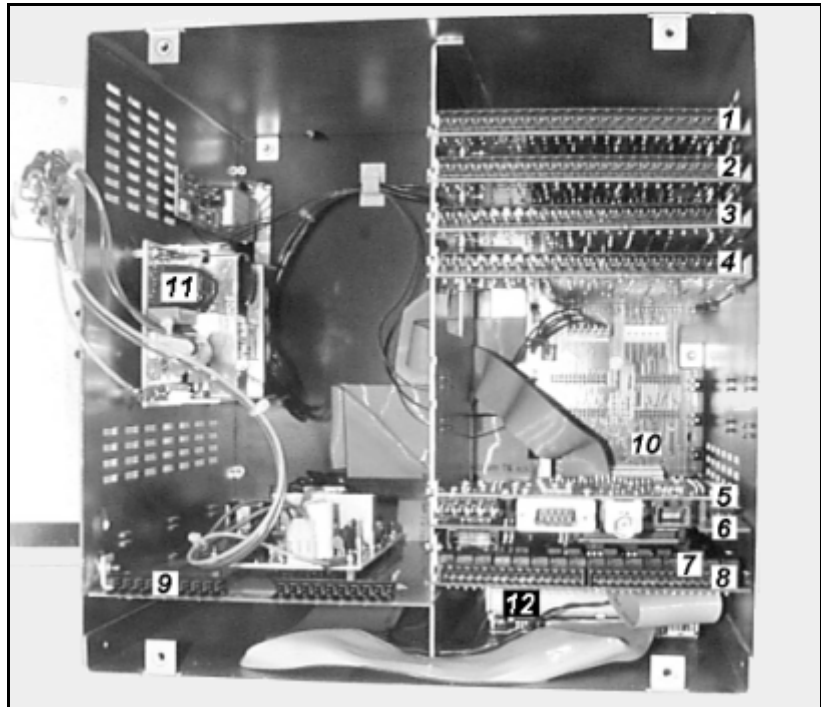


FIGURE 12.2 Position of the internal boards

Standard and Universal Analogue Cards

The mechanical constraints for the standard analogue card and the universal analogue card are the same.

The *Multitrend Plus V5* has four positions for analogue input cards. Slots A and A1, on the rear panel, are primarily for the standard analogue card with slots B and B1 for the universal analogue card. However, either slot can be used for both types of analogue card. Maximum of 32 channels of input.

Installation for either of the analogue cards in slot A, A1, B or B1 positions, follows the same procedure.

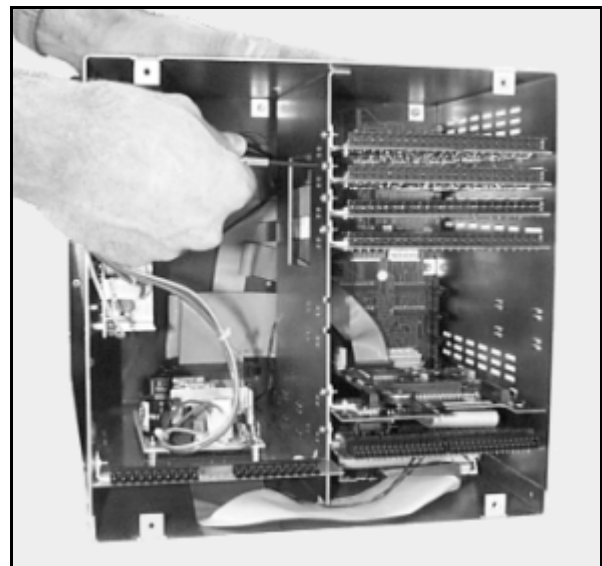
Removing the Analogue Card

- If replacing any of the analogue cards, first remove any cards as necessary from slots A, A1 or slots B, B1 positions. This is done by locating the earthing screw on the left side of the dividing panel in the middle of the unit (looking from the rear). Slot A's earthing screw is at the top, slot B is second from the top, slot A1 is third and slot B1 is fourth from the top.
- Remove and retain the screws and shakeproof washers using a short reach screwdriver.
- Grip the front of the card, or by the connector, and gently pull to release the card from its connection to the mother board at the front of the unit.

Inserting the Analogue Card

- Slide the new analogue card carefully back along the board guides, until the fixing bracket on the left side of the analogue card is in line with the single fixing hole on the side of the dividing panel. The analogue card will locate into a mating connector in the mother board at the front of the unit.
- Ensure the card is pushed fully home and that no internal wiring is damaged as the analogue card is returned.
- Replace/fit the earth screw and shakeproof washer, on the side of the dividing panel using a short reach screwdriver, torque to 120cNm or 10.62lbf-in.

FIGURE 12.2
The
Earthing
Screw



Re-assembling the Unit

- Remove the plastic blanking plate safety cover for the appropriate slot on the rear panel, if necessary, by pushing out the push rivets from behind.
- Replace the rear panel, reposition the toothed washers and replace and tighten the four M4 x 8mm pozi pan head self tap screws at each corner of the rear panel.

Chapter 13: Multitrend Plus V5 Alarm Card Installation

Removal of the rear panel (ONLY) is necessary when this operation is intended.

Removing the Rear Panel

CAUTION

OBSERVE ANTI-STATIC PRECAUTIONS

Refer to BS EN1000151:1992. Basic specification. Protection of electrostatic sensitive devices.

Full anti-static precautions **MUST** be observed when in contact with the electronics within the recorder.

Removal of PCBs and battery back-up will result in the loss of all non volatile data. Ensure all data and set-ups are saved first.

Failure to comply with these instructions may result in product damage.

- To remove the rear panel of the recorder, loosen and remove the four M4 x 8mm self tap screws at each corner of the rear panel, taking care to retain both the shakeproof washer and the screw.

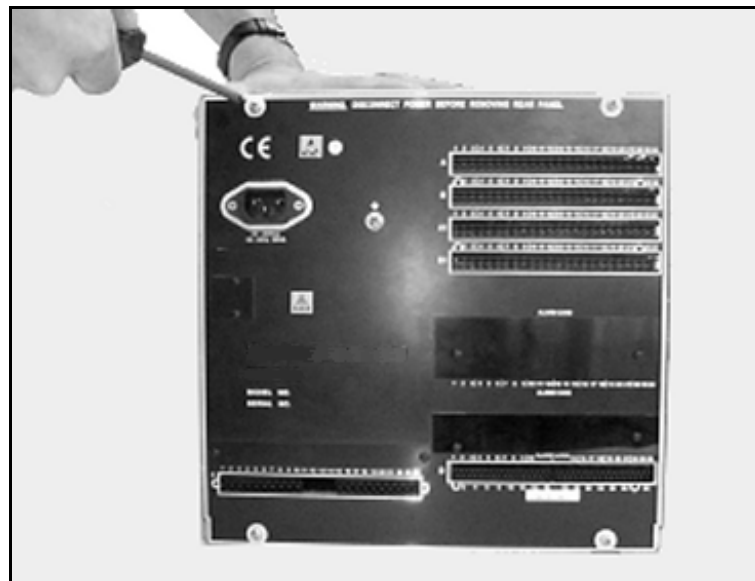


FIGURE 13.1 Removing the rear panel

Inside the Unit

DO NOT disconnect any wiring from the mains socket on the rear panel. Gently move the rear panel to the side of the case to allow internal access.

1.	Analogue Card (A)
2.	Analogue Card (B)
3.	Analogue Card (A1)
4.	Analogue Card (B1)
5.	Comms Card (C)
6.	Processor Card (C)
7.	PCMCIA Card (D) (behind the alarm card)
8.	Alarm Card
9.	Transmitter Power Supply Card
10.	Mother Board
11.	Power Supply
12.	Disk Drive

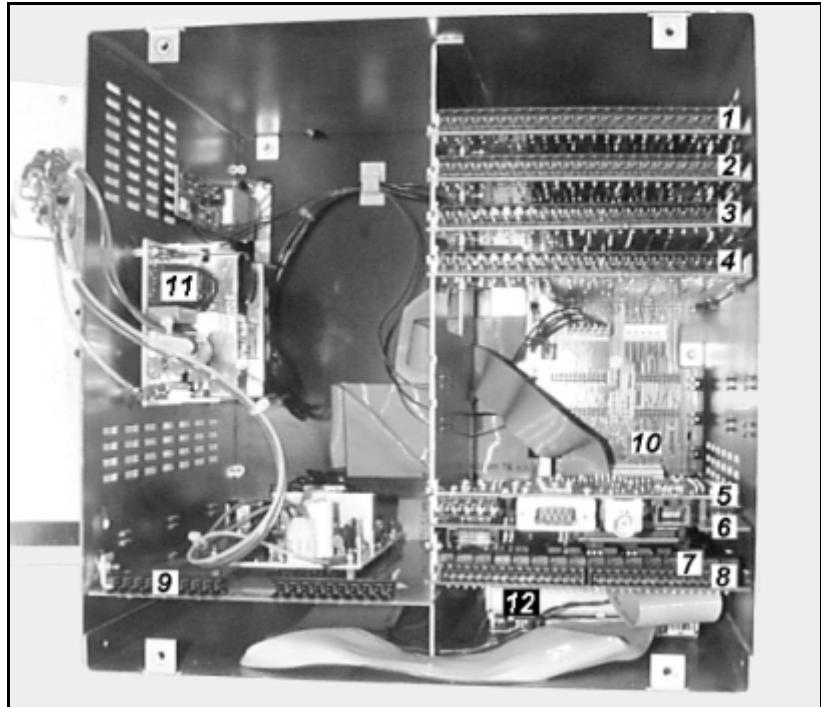


FIGURE 13.2 Position of the internal boards

Alarm Cards

There are two main types of alarm cards, the relay alarm card and the input/output card.

For the *Multitrend Plus V5*, the relay alarm card is available with 4 or 8 channels of relay output, the 8 channel having two channels of digital input as standard.

The input/output cards for the *Multitrend Plus V5* are available with 8, 16 or 32 channels, all channels may be used as digital inputs.

All alarm cards take up position primarily in slot D and an extra alarm card can be fitted in slot D1, shown on the rear panel of the *Multitrend Plus V5*.

If the unit is fitted with a PCMCIA card in alarm slot D, a snubber card will be required. If the unit is fitted with a PCMCIA card in alarm slot D, the snubber card is not required.

For a second alarm to be fitted in slot D1, an alarm interface card is required, which plugs into the mother board.

Up to a total of 32 alarm channels are available.

Removing the Primary Alarm Card in slot D

It is necessary to access the processor card to connect one end of the alarm ribbon cable to the socket on the under side of the card.

- Locate the earth screw for the processor card, on the left side of the dividing panel in the middle of the unit (from the rear). The processor card earth screw is second from the bottom of the unit (C).
- Remove and retain both screw and shakeproof washer using a short reach screw-driver.
- Remove the earth screw and washer for the alarm card in the same way. The primary alarm card occupies the bottom position (D). Retain both the screw and the shakeproof washer.
- Slide the processor board out to reveal a 34-way connector on the under side of the processor card. Remove the existing ribbon cable connector, if necessary. Plug in new alarm ribbon cable to the under side of the processor card. **NB.** Both ends of the ribbon cable are identical. The connector will only fit in one way round. Connect the other end of the ribbon cable in to the 34-way connector on the alarm card.
- This is identified by a location tab on one side of the connector. Push the connectors fully into the socket on the card.
- Connect the other end of the alarm ribbon cable into the 34-way connector on the alarm card.

Inserting the Primary Alarm Card in slot D

- Fit snubber card into alarm slot D, if a PCMCIA card is *not* fitted.
- Begin to slide the processor card back into its slot holding the alarm card parallel below, allowing the ribbon cable to bend into a comfortable 'S' shape. Both the cards need to be inserted simultaneously to keep the ribbon cable in its folded 'S' shape position.

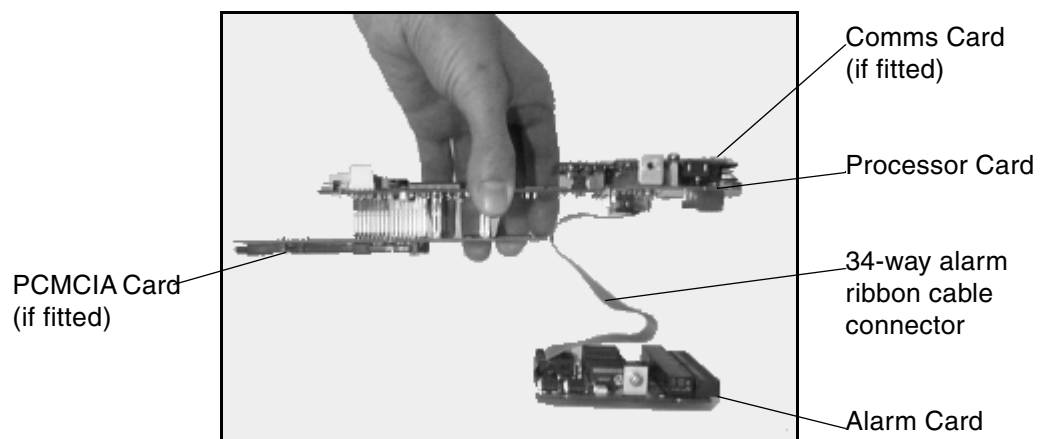
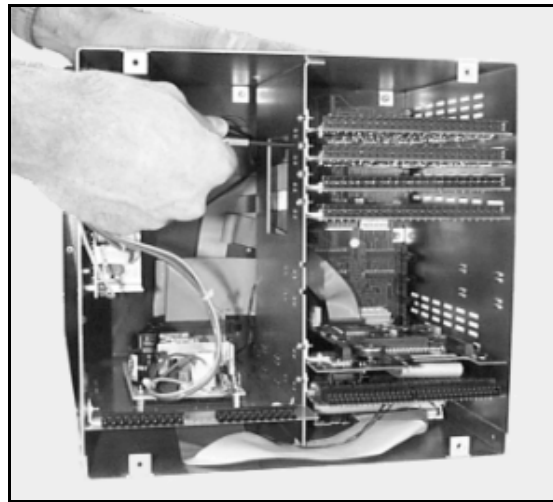


FIGURE 13.3 The alarm card plugs in underneath the processor card

- Slide the cards carefully back into the extrusion, until the fixing bracket on the left side of the cards are in line with the single fixing hole on the side of the extrusion.
- Ensure that no internal wiring is damaged as the alarm card is returned.
- The processor card will locate into a connector at the front of the unit. Ensure the card is pushed fully home.
- The alarm card does not locate into a connector but needs the earth bracket aligning with the fixing hole on the side of the unit.
- Align the processor card with its fixing hole and earth bracket.
- Replace the earth screw and shakeproof washer on the side of the extrusion, torque to 120cNm or 10.62lbf-in.

FIGURE 13.4 The Earthing Screws



Inserting a Second Alarm Card in slot D1

- A second alarm card can be fitted in slot D1. This is the first available position after the four analogue slots A, A1, B & B, at the top right of the unit.
- The alarm card for this slot comes with the alarm ribbon cable and an alarm interface card.
- Connect the two cards together with the ribbon cable and feed the alarm interface card in to slot D1 using the board guides on the inside of the unit.
- Slide the alarm card in after the interface card using the same board guides. The alarm interface card will locate into two connectors on the mother board at the front of the unit. Ensure the card is pushed fully home.
- Align the alarm card with its fixing hole and earth bracket on the side of the case.
- Replace the earth screw and shakeproof washer on the side of the case, torque to 120cNm.

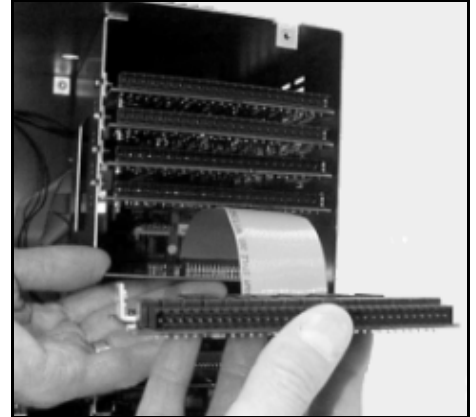


FIGURE 13.5 Second alarm card with an alarm interface card

Re-assembling the Unit

- Remove the plastic blanking plate safety cover on the bottom of the rear panel by pushing out the push rivets (if adding the alarm card as a new option card).
- Replace the rear panel, reposition the shakeproof washers and replace and tighten the four M4 x 8mm pozi pan head screws at each corner of the rear panel.

Chapter 14: Multitrend Plus V5 Power Supply Card & Transmitter Power Supply Card Installation

Removing the Rear Panel

Removal of the rear panel (ONLY) is necessary when this operation is intended.

CAUTION

OBSERVE ANTI-STATIC PRECAUTIONS

Refer to BS EN1000151:1992. Basic specification. Protection of electrostatic sensitive devices.

Full anti-static precautions **MUST** be observed when in contact with the electronics within the recorder.

Removal of PCBs and battery back-up will result in the loss of all non volatile data. Ensure all data and set-ups are saved first.

Failure to comply with these instructions may result in product damage.

- To remove the rear panel of the recorder, loosen and remove the four M4 x 8mm self tap screws at each corner of the rear panel, taking care to retain the screws and shakeproof washers.

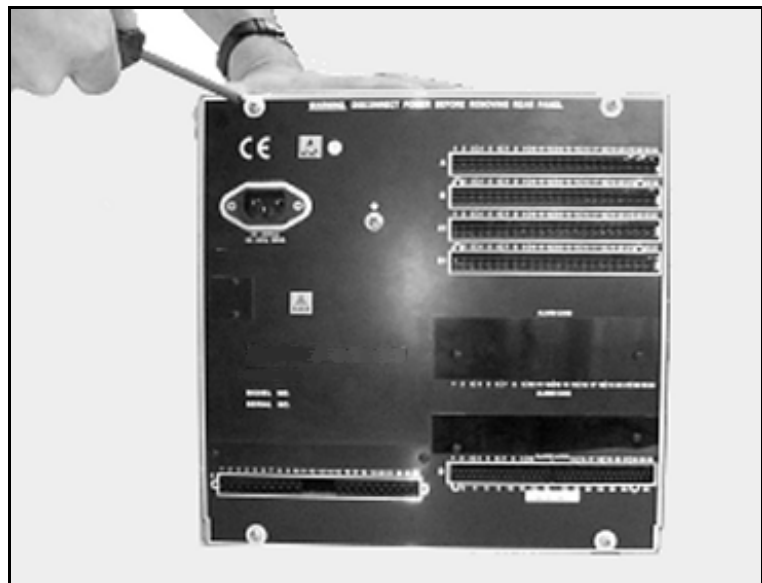


FIGURE 14.1 Removing the rear panel

Inside the Unit

DO NOT disconnect any wiring from the mains socket on the rear panel. Gently move the rear panel to the side of the extrusion to allow internal access.

1.	Analogue Card (A)
2.	Analogue Card (B)
3.	Analogue Card (A1)
4.	Analogue Card (B1)
5.	Comms Card (C)
6.	Processor Card (C)
7.	PCMCIA Card (D) (behind the alarm card)
8.	Alarm Card
9.	Transmitter Power Supply Card
10.	Mother Board
11.	Power Supply
12.	Disk Drive

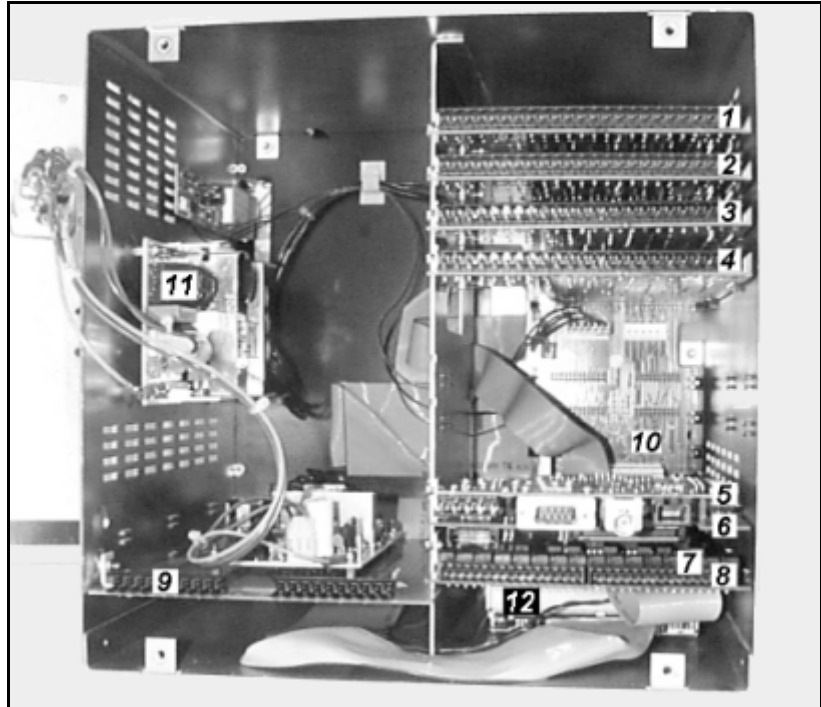


FIGURE 14.2 Position of the internal boards

Power Supply and Transmitter Power Supply Card

The power supply is available as 240 Vac, 24 Vdc or 48 Vdc.

The power supply for either ac or dc units is screwed to the inside of the left panel as you look from the back of the unit

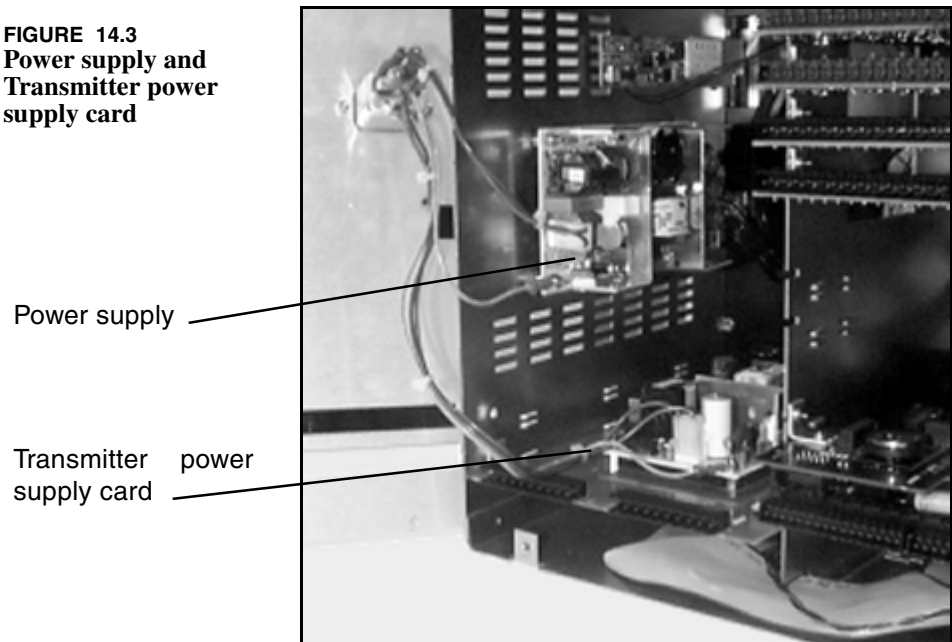
Transmitter power supply card is only available on ac units.

The transmitter power supply card requires the bottom left blanking plate, slot F, on the rear panel to be removed to allow for connection.

Installing the Power Supply

- If replacing a the power supply, remove the 3-way mains loom from the power supply that goes to the mains filter on the rear panel.
- Next remove the earth lead from the mains filter on the rear panel. The new power supply will come with a new earth lead fitted.
- Also disconnect a 6-way connector at the rear of the power supply, this is the dc power to the mother board.
- Locate the 4 screws on the outside of the unit, on the left in the middle (looking from the rear). Remove and retain screws and shakeproof washers.

FIGURE 14.3
Power supply and
Transmitter power
supply card



- Fit the new power supply and reconnect the 6-way connector at the rear of the power supply.
- Reconnect the 3-way mains loom and the earth lead, at the front of the power supply, from the mains filter on the rear panel.

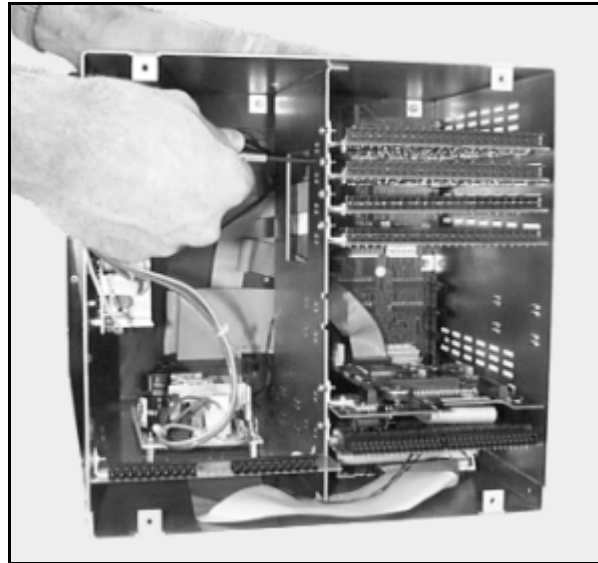
Removing the Transmitter Power Supply Card

- If replacing a the transmitter power supply card, remove the existing card by locating the earthing screw on the outside of the unit, left side (looking from the rear). The bottom earthing screw is for the transmitter power supply card.
- Grip the front of the card and gently pull to release the card, slide the power supply card out.
- Disconnect the 3-way mains filter loom and the earth lead from the mains filter on the rear panel.
- The card can now be removed fully from the unit.

Inserting the Transmitter Power Supply Card

- The new transmitter power supply card will be supplied with an earth lead and the mains filter loom.
- Connect the 3-way mains filter loom and the earth lead from the power supply card to the mains filter on the rear panel. These connections will be fitted with piggy back spade terminals.
- Slide the power supply card carefully into the case along the board guides for slot F.
- The transmitter power supply card can now be fully inserted into the unit until the fixing bracket on the left side of the power supply card is in line with the single fixing hole on the side of the case.
- Ensure the card is pushed fully home and that no internal wiring is damaged as the power supply card is returned.
- Replace/fit the earth screw and shakeproof washer on the side of the extrusion, torque to 120cNm or 10.62lbf-in.

FIGURE 14.4
The
Earthing
Screws



Re-assembling the Unit

- Remove the plastic blanking plate safety cover for the appropriate slot on the rear panel, if necessary, by pushing out the push rivets from behind.
- Replace the rear panel, reposition the toothed washers and replace and tighten the four M4 x 8mm self tap screws at each corner of the rear panel.

Chapter 15: Multitrend Plus V5 Retransmission Card Installation

Removal of the rear panel (ONLY) is necessary when this operation is intended.

Removing the Rear Panel

CAUTION

OBSERVE ANTI-STATIC PRECAUTIONS

Refer to BS EN1000151:1992. Basic specification. Protection of electrostatic sensitive devices.

Full anti-static precautions **MUST** be observed when in contact with the electronics within the recorder.

Removal of PCBs and battery back-up will result in the loss of all non volatile data. Ensure all data and set-ups are saved first.

Failure to comply with these instructions may result in product damage.

- To remove the rear panel of the recorder, loosen and remove the four M4 x 8mm self tap screws at each corner of the rear panel, taking care to retain the screws and shakeproof washers.

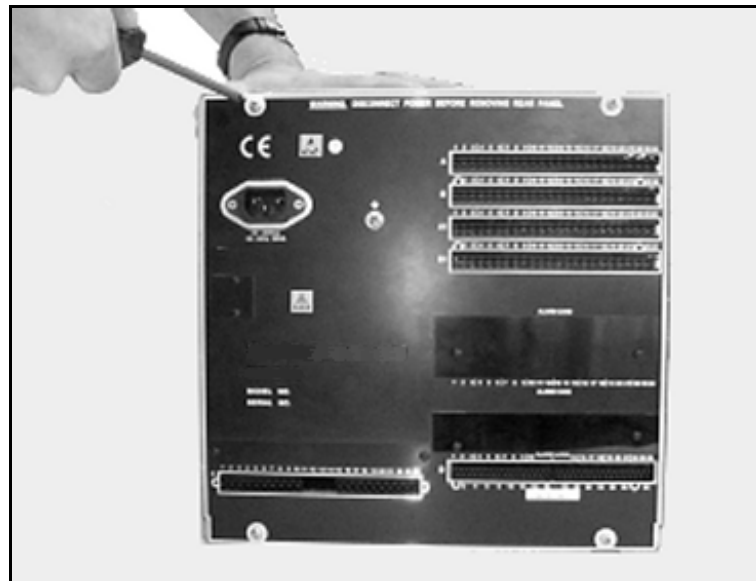


FIGURE 15.1 Removing the rear panel

Inside the Unit

DO NOT disconnect any wiring from the mains socket on the rear panel. Gently move the rear panel to the side of the case to allow internal access.

1.	Analogue Card (A)
2.	Analogue Card (B)
3.	Analogue Card (A1)
4.	Analogue Card (B1)
5.	Comms Card (C)
6.	Processor Card (C)
7.	PCMCIA Card (D) (behind the alarm card)
8.	Alarm Card
9.	Transmitter Power Supply Card
10.	Mother Board
11.	Power Supply
12.	Disk Drive

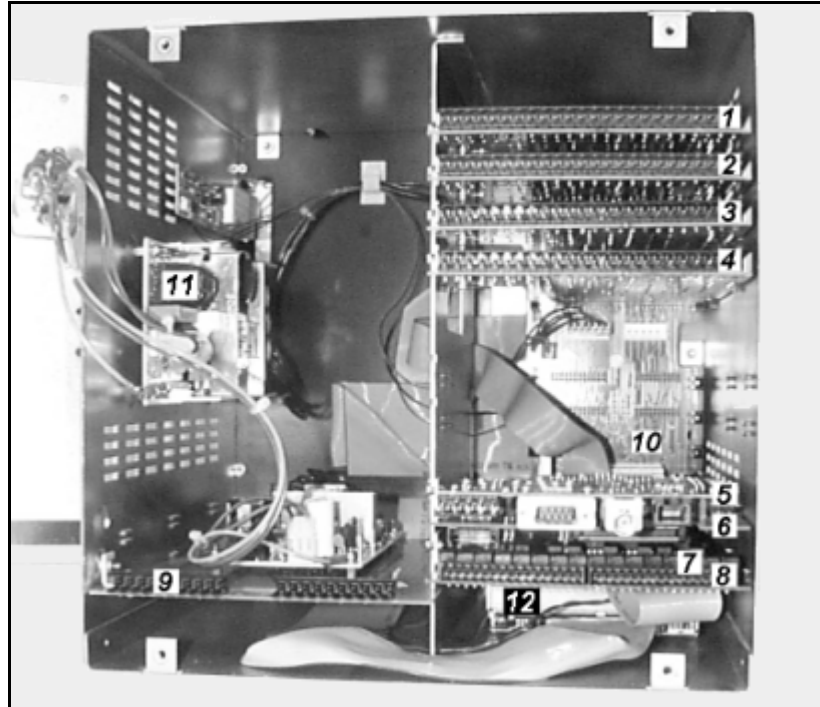


FIGURE 15.2 Position of the internal boards

Retransmission Card

There are two types of retransmission cards, one has two channels of retransmission and the other has 4 channels.

As analogue cards take the positions of slot A and slot B, the preferred slot for the retransmission card is A1. B1 is used if two retransmission cards are fitted and if three analogue cards are fitted B, A1 and B1 are used.

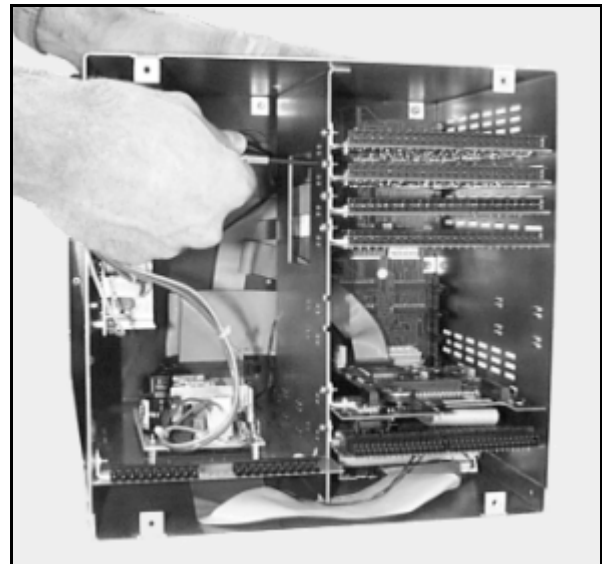
Removing the Retransmission Card

- If replacing a retransmission card, remove any cards as necessary from either slot A1 or slot B1 positions, slot A1 is preferred. This is done simply by locating the earthing screw on the left side of the dividing panel in the middle of the unit (looking from the rear). Slot A1's earthing screw is third from the top and slot B1's earthing screw is fourth from the top.
- Grip the card by its connector and gently pull to release the card from its connection to the mother board.

Inserting the Retransmission Card

- Slide the retransmission card carefully back into the extrusion, until the fixing bracket on the left side of the retransmission card is in line with the single fixing hole on the side of the case.
- The retransmission card will locate into a mating connector in the mother board at the front of the unit.
- Ensure the card is pushed fully home and that no internal wiring is damaged as the retransmission card is returned.
- Replace/fit the earth screw and shakeproof washer on the side of the case, torque to 120cNm or 10.62lbf-in.

FIGURE 15.3
The
Earthing
Screws



Re-assembling the Unit

- Remove the plastic blanking plate safety cover for the appropriate slot on the rear panel, if necessary, by pushing out the push rivets from behind.
- Replace the rear panel, reposition the toothed washers and replace and tighten the four M4 x 8mm self tap screws at each corner of the rear panel.

Chapter 16: Multitrend Plus V5 Communications Card Installation

Removal of the rear panel (ONLY) is necessary when this operation is intended.

CAUTION

OBSERVE ANTI-STATIC PRECAUTIONS

Refer to BS EN1000151:1992. Basic specification. Protection of electrostatic sensitive devices.

Full anti-static precautions MUST be observed when in contact with the electronics within the recorder.

Removal of PCBs and battery back-up will result in the loss of all non volatile data. Ensure all data and set-ups are saved first.

Failure to comply with these instructions may result in product damage.

Removing the Rear Panel

- To remove the rear panel of the recorder, loosen and remove the four M4 x 8mm self tap screws at each corner of the rear panel, taking care to retain the screws and shakeproof washers.

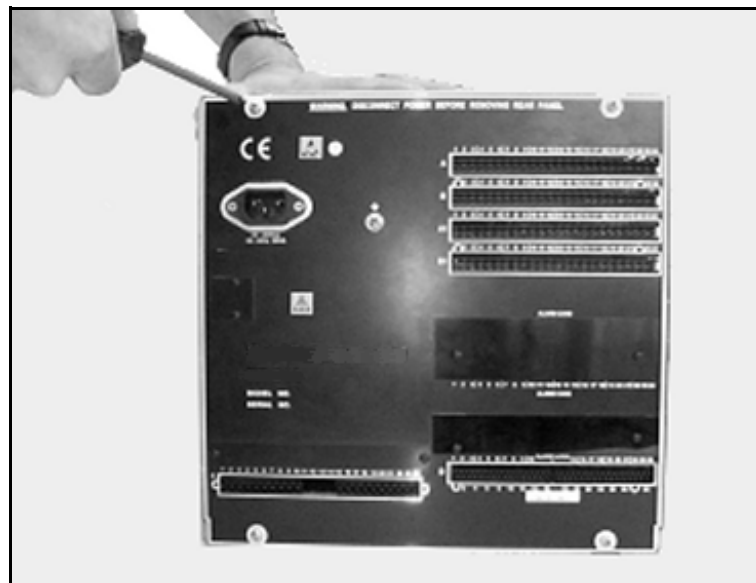


FIGURE 16.1 Removing the rear panel

Inside the Unit

DO NOT disconnect any wiring from the mains socket on the rear panel. Gently move the rear panel to the side of the case to allow internal access.

1.	Analogue Card (A)
2.	Analogue Card (B)
3.	Analogue Card (A1)
4.	Analogue Card (B1)
5.	Comms Card (C)
6.	Processor Card (C)
7.	PCMCIA Card (D) (behind the alarm card)
8.	Alarm Card
9.	Transmitter Power Supply Card
10.	Mother Board
11.	Power Supply
12.	Disk Drive

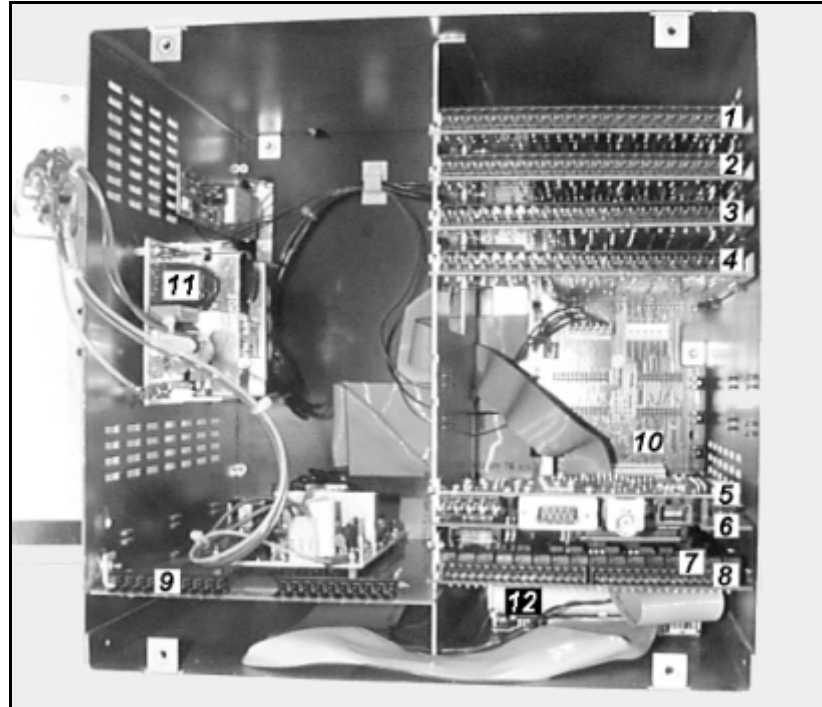


FIGURE 16.2 Position of the internal boards

Communications and RS485 Cards

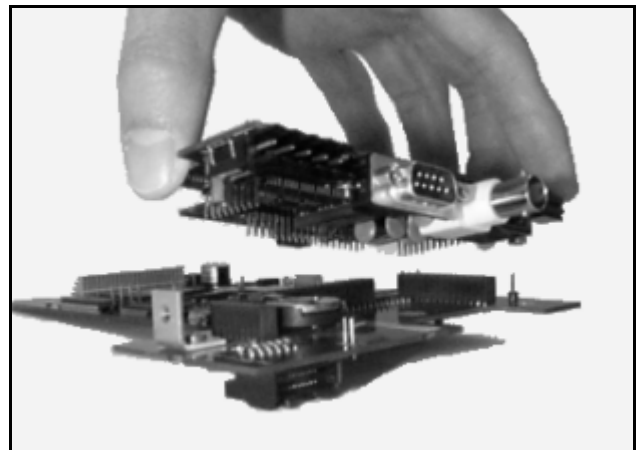
The mechanical constraints for the comms card and the RS485 card are the same.

The comms cards plugs onto the processor card, like a piggy back board, which occupies slot C.

Removing the Comms Cards

- If replacing a comms card, it is necessary to partially slide out the processor card. This is done by locating the earthing screw on the left side of the dividing panel in the middle of the unit (looking from the rear). Slot C earthing screw is second from the bottom, remove and retain screw and shakeproof washer.
- Grip the front of the card, or by the connector, and gently pull to release the card from its connection to the mother board.
- Begin to slide the card out. If an alarm card is also fitted a 34-way connector on the underside of the processor card will have to be disconnected in order to slide the processor card out further.
- Pull out the processor card and turn it over to show the underside of the card.
- Remove the two screws and shakeproof washers from the two pillars connecting the comms and processor cards together, from the underside of the processor card.
- Carefully separate the comms card from the processor card. **TIP** Pull the cards apart evenly from each side. There are three double row headers in different orientations resulting in quite a tight fit.

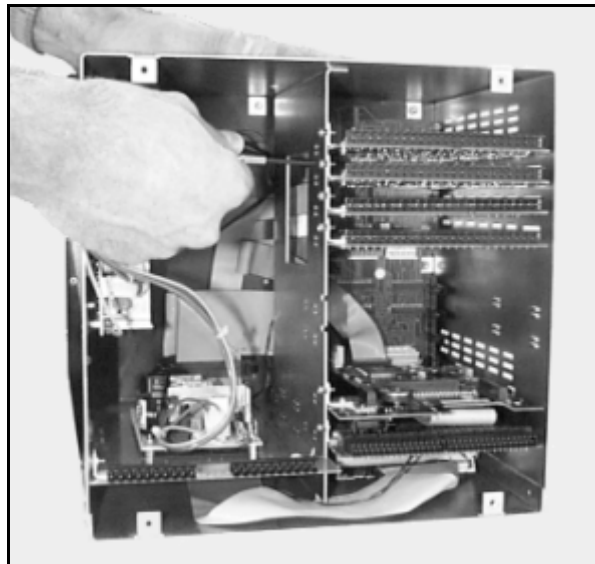
FIGURE 16.3
The comms card plugs
in on top of the
processor card



Inserting the Comms Cards

- Plug in the new comms card to the processor card and replace the two screws and shakeproof washers on the underside of the processor card to secure the pillars, locking the two cards together.
- Begin to slide the processor card carefully back into the extrusion. If an alarm card is fitted keep the ribbon cable flat to the alarm card, slide the processor card in and reconnect the ribbon cable to the connector on the underside of the processor card.
- Insert the processor card fully until the fixing bracket on the left side of the processor card is in line with the single fixing hole on the side of the dividing panel.
- The processor card will locate into a mating connector in the mother board at the front of the unit.
- Ensure the card is pushed fully home and that no internal wiring is damaged as the alarm card is returned.
- Replace the earth screw and shakeproof washer on the side of the case, torque to 120cNm or 10.62lbf-in.

FIGURE 16.4
The
Earthing
Screws



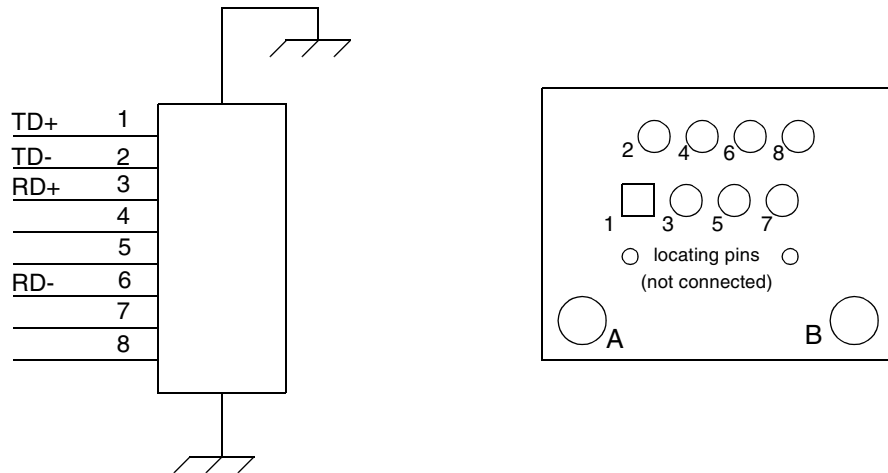
Re-assembling the Unit

- Remove the plastic blanking plate safety cover for the appropriate slot on the rear panel, if necessary, by pushing out the push rivets from behind.
- Replace the rear panel, reposition the shakeproof washers and replace and tighten the four M4 x 8mm self tap screws at each corner of the rear panel.

Connection Details

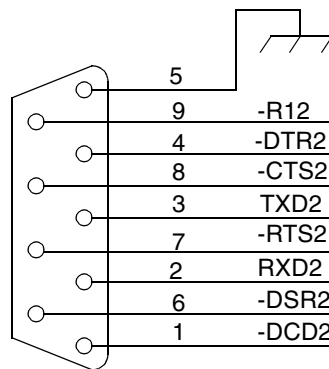
Ethernet Interface

This is an 8-way RL45 socket Molex 95040-288" used for Ethernet connection, pcb position J5. Standard Ethernet connection.



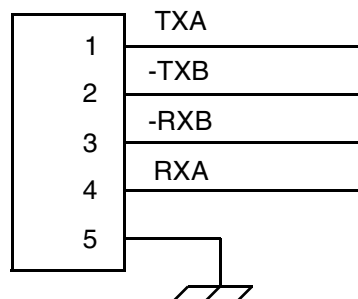
RS232 Interface (Comm2)

This is a 9-way D-type connector (mating half not supplied), pcb position P1.



RS485 Interface (Comm3 Trendbus)

This is a 5-way socket (mating half supplied), pcb position J1.



Chapter 17: Multitrend Plus V5 Processor Card Installation

Removal of the rear panel (ONLY) is necessary when this operation is intended.

Removing the Rear Panel

CAUTION

OBSERVE ANTI-STATIC PRECAUTIONS

Refer to BS EN1000151:1992. Basic specification. Protection of electrostatic sensitive devices.

Full anti-static precautions MUST be observed when in contact with the electronics within the recorder.

Removal of PCBs and battery back-up will result in the loss of all non volatile data. Ensure all data and set-ups are saved first.

Failure to comply with these instructions may result in product damage.

- To remove the rear panel of the recorder, loosen and remove the four M4 x 8mm self tap screws at each corner of the rear panel, taking care to retain the screws and shakeproof washers.

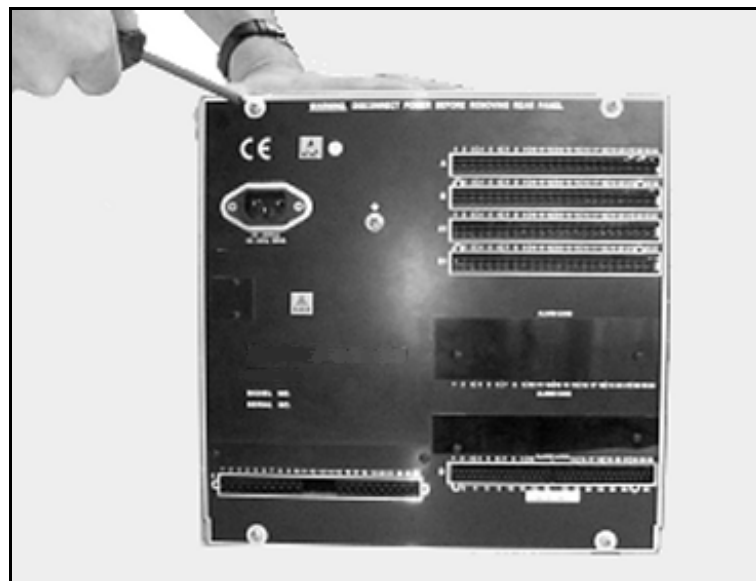


FIGURE 17.1 Removing the rear panel

Inside the Unit

DO NOT disconnect any wiring from the mains socket on the rear panel. Gently move the rear panel to the side of the case to allow internal access.

1.	Analogue Card (A)
2.	Analogue Card (B)
3.	Analogue Card (A1)
4.	Analogue Card (B1)
5.	Comms Card (C)
6.	Processor Card (C)
7.	PCMCIA Card (D) (behind the alarm card)
8.	Alarm Card
9.	Transmitter Power Supply Card
10.	Mother Board
11.	Power Supply
12.	Disk Drive

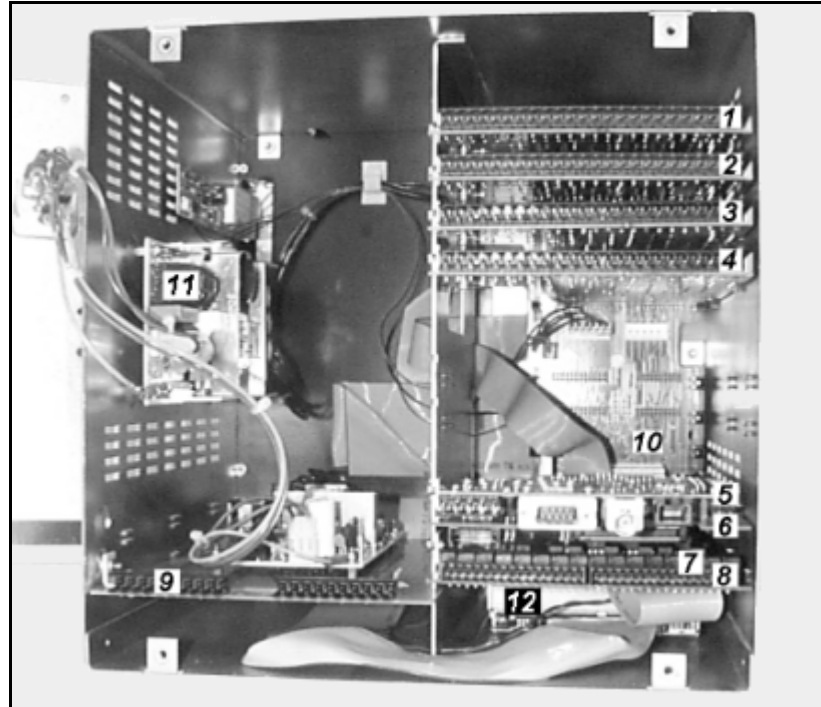


FIGURE 17.2 Position of the internal boards

Processor Card

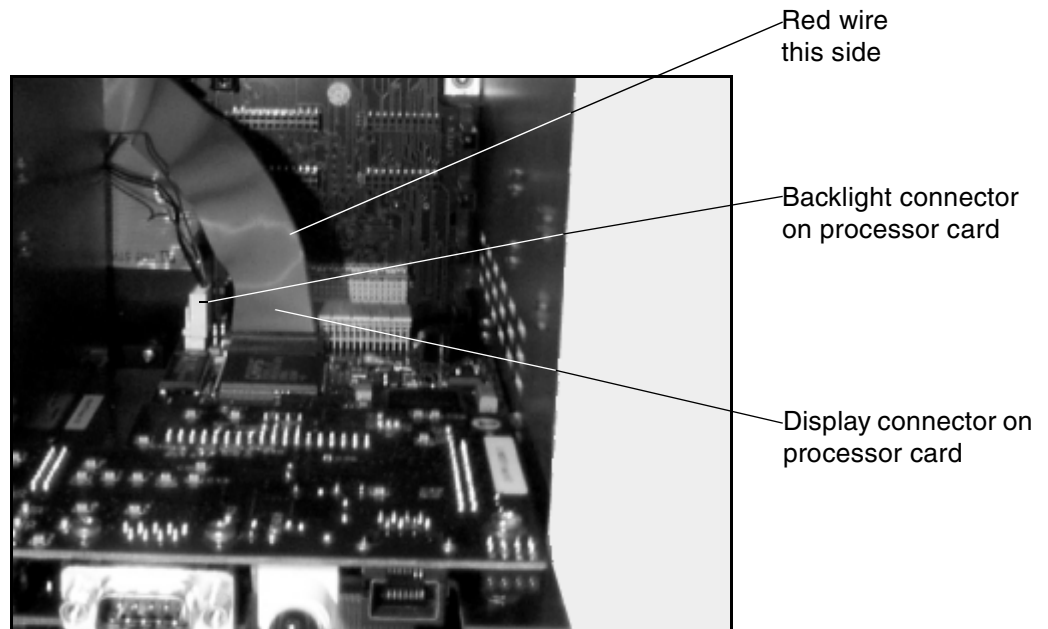
The processor card is not an options card and is fitted in all units.

The processor card occupies slot C on the back of the unit.

Removing the Processor Card.

- If replacing a processor card, remove any cards as necessary from the slot C position. This is done by locating the earthing screw on the left side of the dividing panel in the middle of the unit (looking from the rear). Slot C's earthing screw is second from the bottom.
- Grip the card by its connector and gently pull to release the card from its connection to the mother board.
- Pull the card out about half way then disconnect the two connectors on the processor card in order to release the card. One is a small 40-way ribbon cable connector, this is the display connector, and the other is a 5-way connector which goes to the back light. Disconnect both from the processor card and remove.
- If there is an alarm card fitted, in the slot below (slot D), there will be a 34-way connector attached to the underside of the processor card, this must be disconnected before the processor card can be removed.
- If a comms card is fitted it will have to be removed. The comms card plugs in on top of the processor card. To do this pull the cards out of the unit and turn them over to show the underside of the processor card. Remove the two screws and shakeproof washers from the two pillars connecting the two cards together, from the underside of the processor card.
- Carefully separate the comms card from the processor card. Pull the two boards apart rotating them 90° each time. There are three double row headers in different orientations, therefore pulling from alternate side will ease the process.

FIGURE 17.3 Processor card



Inserting the Processor Card

- Plug in the PCMCIA card, if fitted, into the under side of the processor card and ensure all four headers are pushed fully home.
- Plug in the comms card, if fitted, to the processor card and replace the two screws and shakeproof washers on the underside of the processor card to secure the pillars, locking the two cards together.
- Begin to slide the PC card back along the board guides of slot D. The processor card will then locate along the board guides for slot C.
- When the processor card is half way in, reconnect the ribbon cable display connector and the 5-way connector for the backlight.
- If an alarm card is fitted, connect via the 34-way alarm ribbon cable and begin to slide it in along the board guides, keeping the ribbon cable flat to the alarm card.
- All the boards will slide in together with the processor card locating into a mating connector on the mother board at the front of the unit.
- Insert the processor card fully until the fixing bracket on the left side of the processor card is in line with the single fixing hole on the side of the dividing panel in the middle of the unit.
- Line up the alarm card and replace the earthing screw in the same way.
- Ensure the card is pushed fully home and that no internal wiring is damaged as the alarm card is returned.
- Replace the earth screw and toothed washer on the side of the case, torque to 120cNm or 10.62lbf-in.

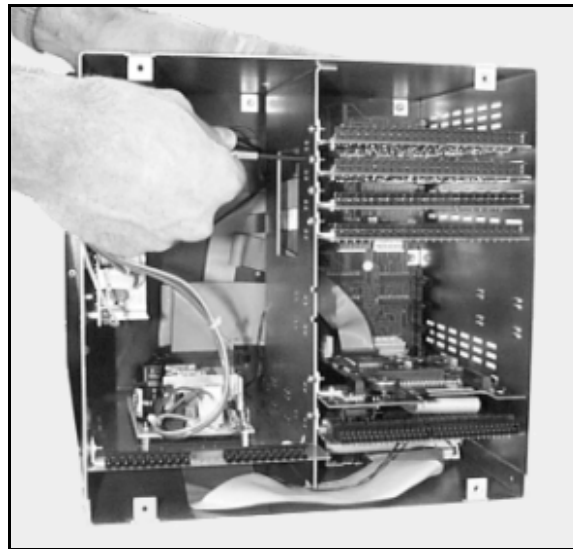


FIGURE 17.4
The Earthing
Screws

- Re-assembling the Unit
- Remove the plastic blanking plate safety cover for the appropriate slot on the rear panel, if necessary, by pushing out the push rivets from behind.
- Replace the rear panel, reposition the toothed washers and replace and tighten the four M4 x 8mm self tap screws at each corner of the rear panel.

Chapter 18: Multitrend Plus V5 PCMCIA Card Installation

Removal of the rear panel (ONLY) is necessary when this operation is intended.

Removing the Rear Panel

CAUTION

OBSERVE ANTI-STATIC PRECAUTIONS

Refer to BS EN1000151:1992. Basic specification. Protection of electrostatic sensitive devices.

Full anti-static precautions **MUST** be observed when in contact with the electronics within the recorder.

Removal of PCBs and battery back-up will result in the loss of all non volatile data. Ensure all data and set-ups are saved first.

Failure to comply with these instructions may result in product damage.

- To remove the rear panel of the recorder, loosen and remove the four M4 x 8mm self tap screws at each corner of the rear panel, taking care to retain the screws and shakeproof washers.

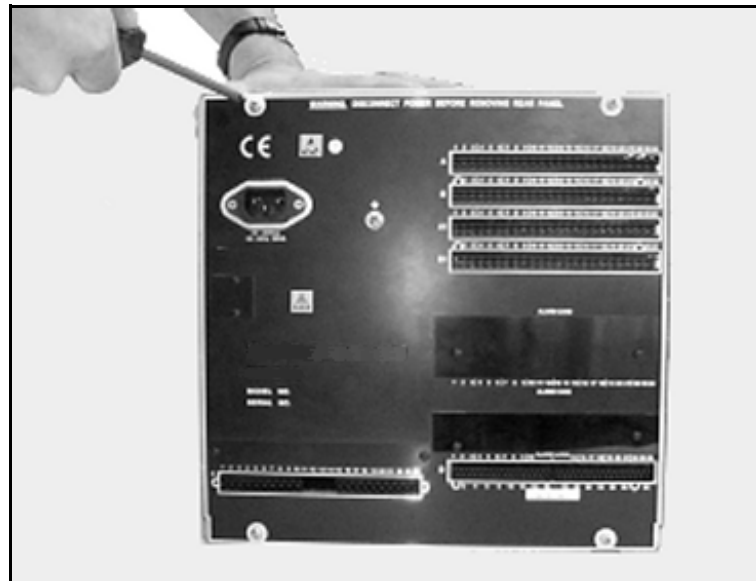


FIGURE 18.1 Removing the rear panel

Inside the Unit

DO NOT disconnect any wiring from the mains socket on the rear panel. Gently move the rear panel to the side of the case to allow internal access.

1.	Analogue Card (A)
2.	Analogue Card (B)
3.	Analogue Card (A1)
4.	Analogue Card (B1)
5.	Comms Card (C)
6.	Processor Card (C)
7.	PCMCIA Card (D) (behind the alarm card)
8.	Alarm Card
9.	Transmitter Power Supply Card
10.	Mother Board
11.	Power Supply
12.	Disk Drive

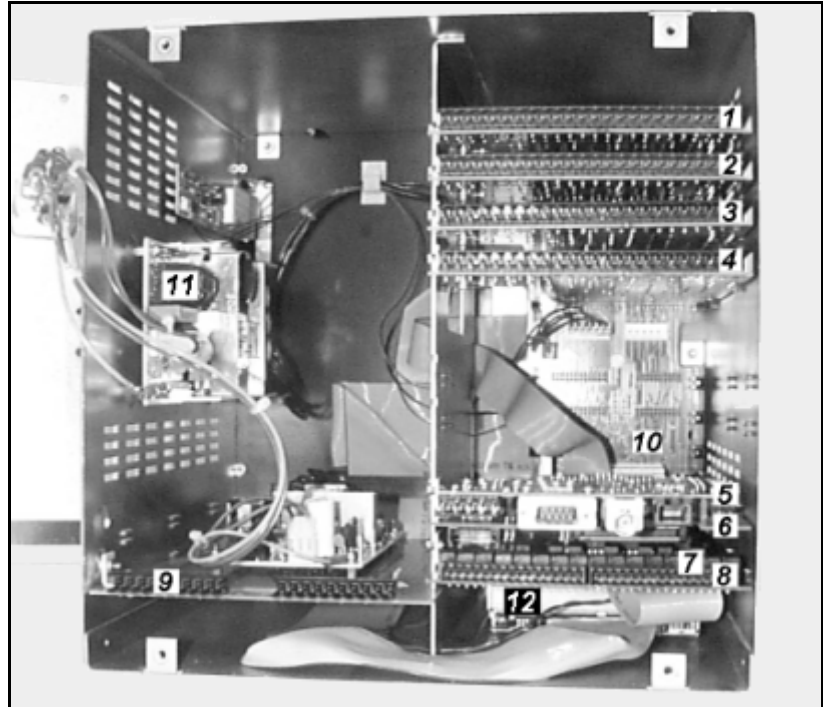


FIGURE 18.2 Position of the internal boards

PCMCIA Card

The PCMCIA card, known as the PC card, is an extra memory card option which can be used as a hard drive.

The PC card is plugged into the processor card which occupies slot C.

The PC card goes into the area behind the alarm card (if fitted) in slot D.

Removing the PCMCIA Card.

- If replacing a PC card, remove any cards as necessary from the slot D position. This is done by locating the earthing screw on the left side of the dividing panel in the middle of the unit (looking from the rear). Slot D's earthing screw is at the bottom.
- If there is an alarm card in slot D it will be attached to the processor card via a 34-way ribbon cable connector, this can be left connected.
- It is necessary to remove the processor card in slot C. This is done by locating and removing the earthing screw from slot C, which is second from the bottom of the dividing panel in the middle of the unit.
- There are two connectors on the processor card which need to be disconnected in order to release the card. One is a small 40-way ribbon cable connector, which goes to the display, and the other is a 5-way connector which goes to the back light. Disconnect both from the processor card and remove.
- Grip the processor card by its connector and gently pull to release the card from its connection to the mother board.
- If there is a comms card fitted, this will be a separate card plugged into the top of the processor card, this is not affected.

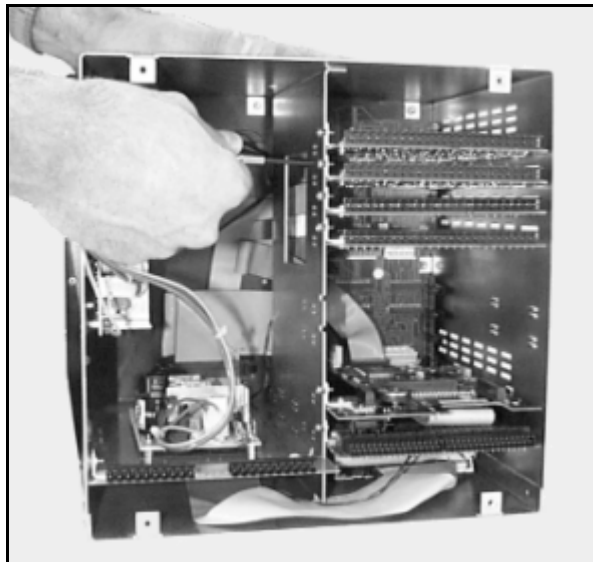
FIGURE 18.3
PCMCIA card plugs
in underneath the
processor card



Inserting the PCMCIA Card

- Plug in the PC card into the under side of the processor card and ensure all four headers are pushed fully home.
- Begin to slide the PC card back along the board guides of slot D. The processor card will then locate along the board guides for slot C.
- When the processor card is half way in, reconnect the ribbon cable display connector and the 5-way connector for the backlight.
- If an alarm card is fitted begin to slide it in behind the PC card, keeping the ribbon cable flat to the alarm card.
- All the boards should slide in together with the processor card locating into a mating connector on the mother board at the front of the unit.
- Insert the processor card fully until the fixing bracket on the left side of the processor card is in line with the single fixing hole on the side of the dividing panel in the middle of the unit. Line up the alarm card and replace the earthing screw in the same way.
- Ensure the card is pushed fully home and that no internal wiring is damaged as the alarm card is returned.
- Replace the earth screw and toothed washer on the side of the case, torque to 120cNm or 10.62lbf-in.

FIGURE 18.4
The
Earthing
Screws



Re-assembling the Unit

- Remove the plastic blanking plate safety cover for the appropriate slot on the rear panel, if necessary, by pushing out the push rivets from behind.
- Replace the rear panel, reposition the toothed washers and replace and tighten the four M4 x 8mm self tap screws at each corner of the rear panel.

Chapter 19: Multitrend Plus V5 Rear Panel Assembly

Removing the Rear Panel

CAUTION

OBSERVE ANTI-STATIC PRECAUTIONS

Refer to BS EN1000151:1992. Basic specification. Protection of electrostatic sensitive devices.

Full anti-static precautions **MUST** be observed when in contact with the electronics within the recorder.

Removal of PCBs and battery back-up will result in the loss of all non volatile data. Ensure all data and set-ups are saved first.

Failure to comply with these instructions may result in product damage.

- To remove the rear panel of the recorder, loosen and remove the four M4 x 8mm self tap screws at each corner of the rear panel, taking care to retain the screws and shakeproof washers.

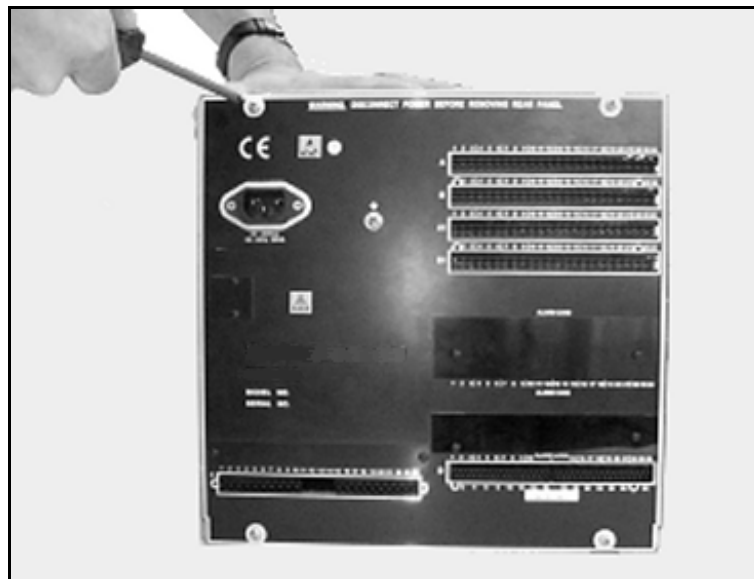


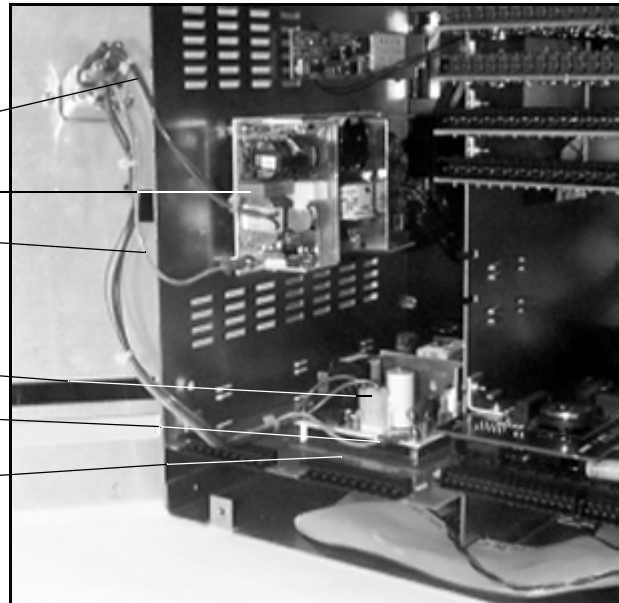
FIGURE 19.1 Removing the rear panel

Replacing the Rear Panel Assembly

- Remove, from the power supply, the 3-way mains filter loom connecting the live and neutral wires from the rear panel assembly (blue and brown wires).
- Disconnect the earth lead from the mains filter on the rear panel assembly (green/yellow).
- If a transmitter power supply card is fitted, remove the 3-way mains filter loom connecting the live and neutral wires from the rear panel assembly (blue and brown wires) and disconnect the earth lead from the mains filter on the rear panel assembly (green/yellow). These connections will be fitted with piggy back spade terminals on the mains filter.
- Connect the 3-way mains filter loom from the new rear panel assembly to the power supply.
- Connect the earth lead from the power supply on to the new rear panel assembly.

FIGURE 19.2
Rear panel connections

Mains filter loom
Power supply
Earth lead
Main filter loom
Earth lead
Transmitter power supply card



Re-assembling the Unit

- Replace the rear panel, reposition the toothed washers and replace and tighten the four M4 x 8mm pozi pan head self tap screws at each corner of the rear panel.

Chapter 20: Multitrend Plus V5 Disk Drive Replacement

Removing the Rear Panel

CAUTION

OBSERVE ANTI-STATIC PRECAUTIONS

Refer to BS EN1000151:1992. Basic specification. Protection of electrostatic sensitive devices.

Full anti-static precautions **MUST** be observed when in contact with the electronics within the recorder.

Removal of PCBs and battery back-up will result in the loss of all non volatile data. Ensure all data and set-ups are saved first.

Failure to comply with these instructions may result in product damage.

- To remove the rear panel of the recorder, loosen and remove the four M4 x 8mm self tap screws at each corner of the rear panel, taking care to retain the screws and shakeproof washer.

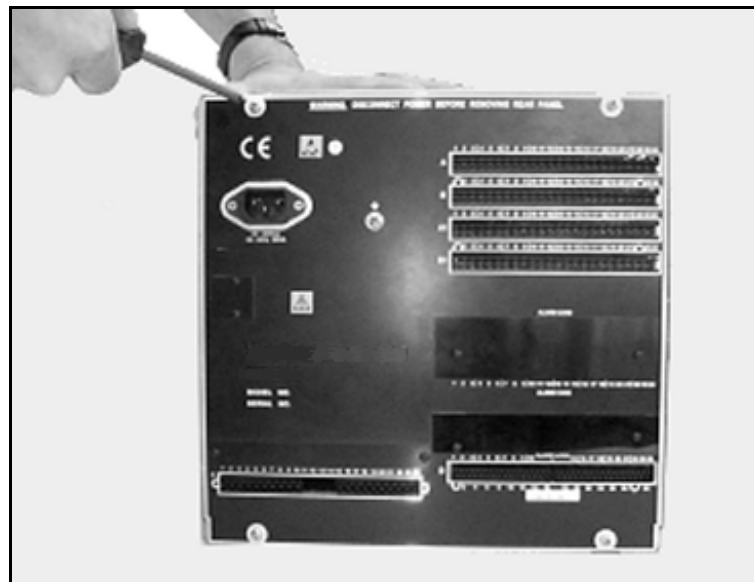


FIGURE 20.1 Removing the rear panel

Removal of the rear panel is necessary for replacement or fitting any of the PC cards.

Disk Drive Replacement

Before the disk drive can be accessed it is necessary to remove any card from slots C and D.

Slot C is occupied by the processor card and possibly a comms card. For removal of these cards see [“Multitrend Plus V5 Processor Card Installation”](#) on page 63.

Remove any cards from slot D, these may be an alarm card and/or a PCMCIA memory card. See [“Multitrend Plus V5 Disk Drive Replacement”](#) on page 73 and [“Multitrend Plus V5 PCMCIA Card Installation”](#) on page 67.

Inside the Unit

DO NOT disconnect any wiring from the mains socket on the rear panel. Gently move the rear panel to the side of the case to allow internal access.

1.	Analogue Card (A)
2.	Analogue Card (B)
3.	Analogue Card (A1)
4.	Analogue Card (B1)
5.	Comms Card (C)
6.	Processor Card (C)
7.	PCMCIA Card (D) (behind the alarm card)
8.	Alarm Card
9.	Transmitter Power Supply Card
10.	Mother Board
11.	Power Supply
12.	Disk Drive

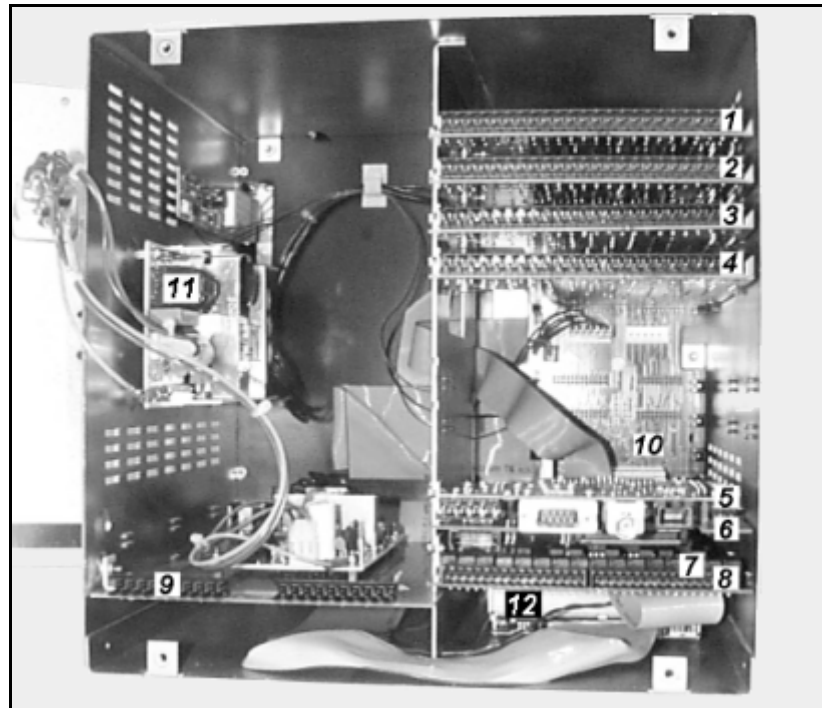
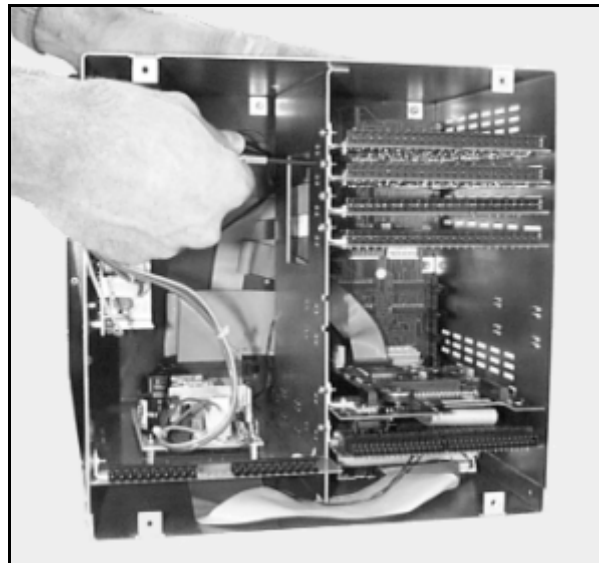


FIGURE 20.2 Position of the internal boards

Disk Drive Installation

- After all the cards have been removed from slots C and D, unscrew the four fixing screws from the underside of the unit. The four screws are recessed into dimples, remove and retain the screws.
- Disconnect the two connectors on the end of the disk drive and re connect to the new disk drive.
- Position the new disk drive over the mounting holes and replace using the original screws.
- Replace the processor card in slot C. See [“Multitrend Plus V5 Processor Card Installation” on page 63.](#)
- Replace any cards in slot D. See [“Multitrend Plus V5 Disk Drive Replacement” on page 73](#) and [“Multitrend Plus V5 PCMCIA Card Installation” on page 67.](#)

FIGURE 20.3
The
Earthing
Screw



Re-assembling the Unit

- Replace the rear panel, reposition the shakeproof washers and replace and tighten the four M4 x 8mm pozi pan head self tap screws at each corner of the rear panel.

Index

A

Alarm Card, 2nd, slot D1, Multi Plus V5 ..47
Alarm Card, Minitrend V57
Alarm Card, Multitrend Plus V543
Analogue Card, Minitrend V53
Analogue Card, Multitrend Plus V539

C

Communications Card, Minitrend V519
Communications Card, Multi Plus V557

D

Disk Drive, Minitrend V533
Disk Drive, Multitrend Plus V573
Display Assembly, Minitrend V537

P

PCMCIA Card, Minitrend V527
PCMCIA Card, Multitrend Plus V567
Power Supply Card, Minitrend V511
Power Supply Card, Multitrend Plus V5 ...49
Processor Card, Minitrend V523
Processor Card, Multitrend Plus V563

R

Rear Panel Assembly, Minitrend V531
Rear Panel Assembly, Multitrend Plus V5 71
Retransmission Card, Minitrend V515
Retransmission Card, Multitrend Plus V5 53

T

Transmitter Power Supply Card, Minitrend V511
Transmitter Power Supply Card, Multi Plus V549

Please take a moment to complete this questionnaire

1	Reputation
<p>How would you rate the reputation of Honeywell</p> <p>Tick as appropriate</p> <p><input type="checkbox"/> A very reputable, successful company</p> <p><input type="checkbox"/> A reputable company</p> <p><input type="checkbox"/> A disreputable company</p> <p><input type="checkbox"/> No views either way</p>	

2	Service																																														
<p>How do you rate or perceive the following service levels provided by our sales staff?</p> <p>Tick as appropriate Excellent Good Fair</p> <table border="0"> <tr> <td>Response speed</td> <td style="text-align: center;"><input type="checkbox"/></td> <td style="text-align: center;"><input type="checkbox"/></td> <td style="text-align: center;"><input type="checkbox"/></td> </tr> <tr> <td>Quality of response</td> <td style="text-align: center;"><input type="checkbox"/></td> <td style="text-align: center;"><input type="checkbox"/></td> <td style="text-align: center;"><input type="checkbox"/></td> </tr> <tr> <td>Follow up response</td> <td style="text-align: center;"><input type="checkbox"/></td> <td style="text-align: center;"><input type="checkbox"/></td> <td style="text-align: center;"><input type="checkbox"/></td> </tr> <tr> <td>Overall level of service</td> <td style="text-align: center;"><input type="checkbox"/></td> <td style="text-align: center;"><input type="checkbox"/></td> <td style="text-align: center;"><input type="checkbox"/></td> </tr> </table> <p>How do you rate or perceive the following service levels provided by our Technical Support Service?</p> <p>Tick as appropriate Excellent Good Fair</p> <table border="0"> <tr> <td>Response speed</td> <td style="text-align: center;"><input type="checkbox"/></td> <td style="text-align: center;"><input type="checkbox"/></td> <td style="text-align: center;"><input type="checkbox"/></td> </tr> <tr> <td>Quality of response</td> <td style="text-align: center;"><input type="checkbox"/></td> <td style="text-align: center;"><input type="checkbox"/></td> <td style="text-align: center;"><input type="checkbox"/></td> </tr> <tr> <td>Follow up response</td> <td style="text-align: center;"><input type="checkbox"/></td> <td style="text-align: center;"><input type="checkbox"/></td> <td style="text-align: center;"><input type="checkbox"/></td> </tr> <tr> <td>Overall level of service</td> <td style="text-align: center;"><input type="checkbox"/></td> <td style="text-align: center;"><input type="checkbox"/></td> <td style="text-align: center;"><input type="checkbox"/></td> </tr> </table> <p>How could our service be improved upon</p> <p>.....</p> <p>.....</p> <p>How many times do you receive a visit from one of our Sales representatives? Visits every:</p> <p>1-3 months <input type="checkbox"/> 3-6 months <input type="checkbox"/> 6-12 months <input type="checkbox"/></p> <p>How does that compare to our competitors?</p> <p>More <input type="checkbox"/> Less <input type="checkbox"/> The same <input type="checkbox"/></p> <p>Score on a level of 1-10, with 10 being the best</p> <table border="0"> <tr> <td>Quality of manuals / sales literature</td> <td style="text-align: center;"><input type="checkbox"/></td> </tr> <tr> <td>Administration / documentation and letters</td> <td style="text-align: center;"><input type="checkbox"/></td> </tr> <tr> <td>Technical expertise of our sales staff</td> <td style="text-align: center;"><input type="checkbox"/></td> </tr> <tr> <td>Sales staff ability to give informed advice</td> <td style="text-align: center;"><input type="checkbox"/></td> </tr> <tr> <td>The quality of the Honeywell sales team.</td> <td style="text-align: center;"><input type="checkbox"/></td> </tr> <tr> <td>Pricing</td> <td style="text-align: center;"><input type="checkbox"/></td> </tr> <tr> <td>Honeywell understanding of your industry.</td> <td style="text-align: center;"><input type="checkbox"/></td> </tr> </table>		Response speed	<input type="checkbox"/>	<input type="checkbox"/>	<input type="checkbox"/>	Quality of response	<input type="checkbox"/>	<input type="checkbox"/>	<input type="checkbox"/>	Follow up response	<input type="checkbox"/>	<input type="checkbox"/>	<input type="checkbox"/>	Overall level of service	<input type="checkbox"/>	<input type="checkbox"/>	<input type="checkbox"/>	Response speed	<input type="checkbox"/>	<input type="checkbox"/>	<input type="checkbox"/>	Quality of response	<input type="checkbox"/>	<input type="checkbox"/>	<input type="checkbox"/>	Follow up response	<input type="checkbox"/>	<input type="checkbox"/>	<input type="checkbox"/>	Overall level of service	<input type="checkbox"/>	<input type="checkbox"/>	<input type="checkbox"/>	Quality of manuals / sales literature	<input type="checkbox"/>	Administration / documentation and letters	<input type="checkbox"/>	Technical expertise of our sales staff	<input type="checkbox"/>	Sales staff ability to give informed advice	<input type="checkbox"/>	The quality of the Honeywell sales team.	<input type="checkbox"/>	Pricing	<input type="checkbox"/>	Honeywell understanding of your industry.	<input type="checkbox"/>
Response speed	<input type="checkbox"/>	<input type="checkbox"/>	<input type="checkbox"/>																																												
Quality of response	<input type="checkbox"/>	<input type="checkbox"/>	<input type="checkbox"/>																																												
Follow up response	<input type="checkbox"/>	<input type="checkbox"/>	<input type="checkbox"/>																																												
Overall level of service	<input type="checkbox"/>	<input type="checkbox"/>	<input type="checkbox"/>																																												
Response speed	<input type="checkbox"/>	<input type="checkbox"/>	<input type="checkbox"/>																																												
Quality of response	<input type="checkbox"/>	<input type="checkbox"/>	<input type="checkbox"/>																																												
Follow up response	<input type="checkbox"/>	<input type="checkbox"/>	<input type="checkbox"/>																																												
Overall level of service	<input type="checkbox"/>	<input type="checkbox"/>	<input type="checkbox"/>																																												
Quality of manuals / sales literature	<input type="checkbox"/>																																														
Administration / documentation and letters	<input type="checkbox"/>																																														
Technical expertise of our sales staff	<input type="checkbox"/>																																														
Sales staff ability to give informed advice	<input type="checkbox"/>																																														
The quality of the Honeywell sales team.	<input type="checkbox"/>																																														
Pricing	<input type="checkbox"/>																																														
Honeywell understanding of your industry.	<input type="checkbox"/>																																														

3	Products
<p>How do you perceive our range of products?</p> <p>Tick as appropriate</p> <p><input type="checkbox"/> Products offered are better than those of competitors</p> <p><input type="checkbox"/> Products offered are worse than those of competitors</p> <p><input type="checkbox"/> Products offered are the same as those of competitors</p> <p>Any other comments</p> <p>.....</p> <p>.....</p> <p>.....</p> <p>Are there any products that we do not provide that you would like us to provide - or any we could improve on?</p> <p>.....</p> <p>.....</p> <p>.....</p> <p>Improvements to existing products.....</p> <p>.....</p> <p>.....</p>	

4	General
<p>If you are an existing or new customer, what made you choose Honeywell.</p> <p><input type="checkbox"/> Only on price</p> <p><input type="checkbox"/> Price plus a combination of factors</p> <p><input type="checkbox"/> Prefer to deal with a reputable company</p> <p><input type="checkbox"/> Honeywell offers more than the competition in terms of 'added value' over and above the product itself</p>	

<p>Thank you for completing this questionnaire.</p> <p>Please fill out your name and address below.</p> <p>Photo copy this form and Fax to us on</p> <p style="font-size: 1.2em;">+44 (0)1202 476501</p> <p>Name</p> <p>Company name</p> <p>Address</p> <p>.....</p> <p>County..... Postcode.....</p> <p>Tel:..... Fax.....</p> <p>Company business</p> <p>.....</p>	
--	--

Warranty/Remedy

Honeywell warrants goods of its manufacture as being free of defective material and faulty workmanship. Contact your local sales office for warranty information. If warranted goods are returned to Honeywell during that period of coverage, Honeywell will repair or replace without charge those items it finds defective. The foregoing is Buyer's sole remedy and **is in lieu of all other warranties, expressed or implied, including those of merchantability and fitness for a particular purpose.**

While we provide application assistance, personally, through our literature and the Honeywell web site, it is up to the customer to determine the suitability of the product in the application.

Specifications may change at any time without notice. The information we supply is believed to be accurate and reliable as of this printing. However, we assume no responsibility for its use.

ARGENTINA

HONEYWELL S.A.I.C.
BELGRANO 1156
BUENOS AIRES
ARGENTINA
Tel. : 54 1 383 9290

ASIA PACIFIC

HONEYWELL ASIA
PACIFIC Inc.
Room 3213-3225
Sun Kung Kai Centre
N° 30 Harbour Road
WANCHAI
HONG KONG
Tel. : 852 829 82 98

AUSTRALIA

HONEYWELL LIMITED
5 Thomas Holt Drive
North Ryde Sydney
NSW AUSTRALIA 2113
Tel. : 61 2 353 7000

AUSTRIA

HONEYWELL AUSTRIA
G.m.b.H.
Handelskai 388
A1020 VIENNA
AUSTRIA
Tel. : 43 1 727 800

BELGIUM

HONEYWELL S.A.
3 Avenue de Bourget
B-1140 BRUSSELS
BELGIUM
Tel. : 32 2 728 27 11

BRAZIL

HONEYWELL DO BRA-
ZIL AND CIA
Rua Jose Alves Da
Chunha
Lima 172
BUTANTA
05360.050 SAO PAULO
SP
BRAZIL
Tel. : 55 11 819 3755

BULGARIA

HONEYWELL EOOD
14, Iskarsko Chausse
POB 79
BG- 1592 Sofia
BULGARIA
Tel. : 359-791512/
794027/ 792198

CANADA

HONEYWELL LIMITED
THE HONEYWELL
CENTRE
529 Mc Nicoll Avenue
M2H 2C9 NORTH YORK,
ONTARIO
CANADA
Tel. : 416 502 5200

CZECH REPUBLIC

HONEYWELL, Spol.s.r.o.
Budejovicka 1
140 21 Prague 4
Czech Republic
Tel. : 42 2 6112 3434

DENMARK

HONEYWELL A/S
Automatikvej 1
DK 2860 Soeborg
DENMARK
Tel. : 45 39 55 56 58

FINLAND

HONEYWELL OY
Ruukintie 8
FIN-02320 ESPOO 32
FINLAND
Tel. : 358 0 3480101

FRANCE

HONEYWELL S.A.
Bâtiment « le Mercury »
Parc Technologique de St
Aubin
Route de l'Orme
(CD 128)
91190 SAINT-AUBIN
FRANCE
Tel. from France:
01 60 19 80 00
From other countries:
33 1 60 19 80 00

GERMANY

HONEYWELL AG
Kaiserleistrasse 39
D-63067 OFFENBACH
GERMANY
Tel. : 49 69 80 64444

HUNGARY

HONEYWELL Kft
Gogol u 13
H-1133 BUDAPEST
HUNGARY
Tel. : 36 1 451 43 00

ICELAND

HONEYWELL
Hataekni .hf
Armuli 26
PO Box 8336
128 reykjavik
Iceland
Tel. : 354 588 5000

ITALY

HONEYWELL S.p.A.
Via P. Gobetti, 2/b
20063 Cernusco Sul
Naviglio
ITALY
Tel. : 39 02 92146 1

MEXICO

HONEYWELL S.A. DE
CV
AV. CONSTITUYENTES
900
COL. LOMAS ALTAS
11950 MEXICO CITY
MEXICO
Tel. : 52 5 259 1966

THE NETHERLANDS

HONEYWELL BV
Laaderhoogweg 18
1101 EA AMSTERDAM
ZO
THE NETHERLANDS
Tel. : 31 20 56 56 911

Sales and Service

Honeywell serves its customers through a worldwide network of sales offices and distributors. For application assistance, current specifications, pricing or name of the nearest Authorised Distributor, contact your local sales office or:

INTERNET: www.honeywell.com/sensing

NORWAY

HONEYWELL A/S
Askerveien 61
PO Box 263
N-1371 ASKER
NORWAY
Tel. : 47 66 76 20 00

POLAND

HONEYWELL Sp.z.o.o
Ul Domainewska 41
02-672 WARSAW
POLAND
Tel. : 48 22 606 09 00

PORTUGAL

HONEYWELL
PORTUGAL LDA
Edificio Suecia II
Av. do Forte nr 3 - Piso 3
2795 CARNAXIDE
PORTUGAL
Tel. : 351 1 424 50 00

REPUBLIC OF IRELAND

HONEYWELL
Unit 1
Robinhood Business
Park
Robinhood Road
DUBLIN 22
Republic of Ireland
Tel. : 353 1 4565944

REPUBLIC OF SINGAPORE

HONEYWELL PTE LTD
BLOCK 750E CHAI
CHEE ROAD
06-01 CHAI CHEE IND.
PARK
1646 SINGAPORE
REP. OF SINGAPORE
Tel. : 65 2490 100

REPUBLIC OF SOUTH AFRICA

HONEYWELL
Southern Africa
PO BOX 138
Milnerton 7435
REPUBLIC OF SOUTH
AFRICA
Tel. : 27 11 805 12 01

ROMANIA

HONEYWELL Office
Bucharest
147 Aurel Vlaicu Str.,
Sc.Z.,
Apt 61/62
R-72921 Bucharest
ROMANIA
Tel. : 40-1 211 00 76/
211 79

RUSSIA

HONEYWELL INC
4 th Floor Administrative
Building of AO "Luzhniki"
Management
24 Luzhniki
119048 Moscow
RUSSIA
Tel. : 7 095 796 98 00/01

SLOVAKIA

HONEYWELL Ltd
Mlynske nivy 73
PO Box 75
820 07 BRATISLAVA 27
SLOVAKIA
Tel. : 421 7 52 47 400/
425

SPAIN

HONEYWELL S.A
Factory
Josefa Valcarcel, 24
28027 MADRID
SPAIN
Tel. : 34 91 31 3 61 00

SWEDEN

HONEYWELL A.B.
S-127 86 Skarholmen
STOCKHOLM
SWEDEN
Tel. : 46 8 775 55 00

SWITZERLAND

HONEYWELL A.G.
Hertistrasse 2
8304 WALLISELLEN
SWITZERLAND
Tel. : 41 1 831 02 71

TURKEY

HONEYWELL
Otomasyon ve Kontrol
Sistemleri San ve Tic
A.S.
(Honeywell Turkey A.S.)
Emirhan Cad No 144
Barbaros Plaza C. Blok
Kat 18
Dikilitas 80700 Istanbul
TURKEY
Tel. : 90-212 258 18 30

UNITED KINGDOM

HONEYWELL
Unit 1,2 &4 Zodiac House
Calleva Park
Aldermaston
Berkshire RG7 8HW
UNITED KINGDOM
Tel. : 44 118 906 2600

U.S.A.

HONEYWELL INC.
INDUSTRIAL
CONTROLS DIV.
1100 VIRGINIA DRIVE
PA 19034-3260
FT. WASHINGTON
U.S.A.
Tel. : 1-800-343-0228

VENEZUELA

HONEYWELL CA
APARTADO 61314
1060 CARACAS
VENEZUELA
Tel. : 58 2 239 0211

This publication does not constitute a contract between Honeywell and its customers. The contents may be changed at any time without notice. It is the customer's responsibility to ensure safe installation and operation of the products. Detailed mounting drawings of all products illustrated are available on request.

© Honeywell 2000. All rights reserved.

Honeywell

Sensing and Control

www.honeywell.com/sensing

Honeywell

4 Airfield Way

Christchurch, BH23 3TS

Dorset, U.K.