

TrendManager Pro V5 Batch

Batch Capabilities

Batch – part of the Trend Manager Pro/TrendServer Pro V5 software, which allows the data to be analyzed by batch.

Batch Actions – Batch language keywords used to identify – Start of Batch, End Batch, Batch Pause, Batch Resumption, Aborting of a Batch

Batch Identifiers – Batch language tags used to include – Batch Name, Batch Description, Lot No, User Id and Comments

Batch Commands – add during recording - manually with front thumbwheel, using pre-formatted event message, via communications, or with the Recorder Event Marker System. Messages can be added at the PC after importing the data into TMP using Add User Text Message.

View Batches – at database level or recorder level using Batch Icon.

Filter Events/Batches – by batch name, date/time or event type.

Export Batch data – export to Excel on single or multiple spreadsheets.



Batch Overview

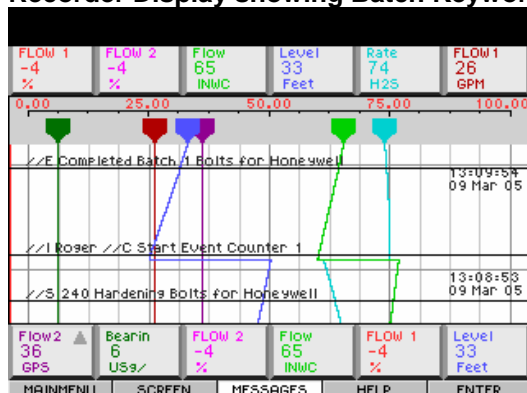
The Batch capability within the Trend Manager Pro V5 software provides users with the ability to easily view and analyze their data in terms of a batch. Users can create batch markers within the data using the recorder's event marker system, manually from the front recorder keys or by sending batch text language commands over the communications link that are used by the TrendManager Pro software to segment the data.

Batch Implementation

- Command and Data Keywords are used to indicate batch related functions like start, stop, pause, resume, or batch comments.
- Batch keywords can be entered manually at the recorder, entered from a pre-formatted list loaded into the recorder's set up, generated automatically through the Event Markers or sent via communications using the RS232 ASCII port for barcodes or Internet Explorer to send a message.
- Batches can be set up retrospectively once data has been imported into TrendManager Pro
- Event Markers make it easy to automatically create Batch Language Keywords that can be tied to process actions.
- View individual batches in the TMP Graph window and easily export this batch data
- No recorder firmware upgrade required.

- Command Keywords
 - //S ##### Start Batch #####
 - //E ##### End Batch #####
 - //P Pause Batch
 - //R Resume Batch
 - //A Abort Batch
 - //+ Join text for longer messages
- Data Keywords (requires additional text information)
 - //B Rename a Batch Name or Number
 - //D Batch Description
 - //I User ID
 - //L Lot Number
 - //C Comments
- Data from eZtrend, Minitrend, Multitrend Plus, Teletrend, Circuitrend, Multitrend, VRX recorders HC 900, UMC 800, or DPR180/250 recorders can be imported and analyzed in a Batch format.

Recorder Display showing Batch Keywords



Example of a Batch Language Command

//S 240 Hardening Bolts for Honeywell

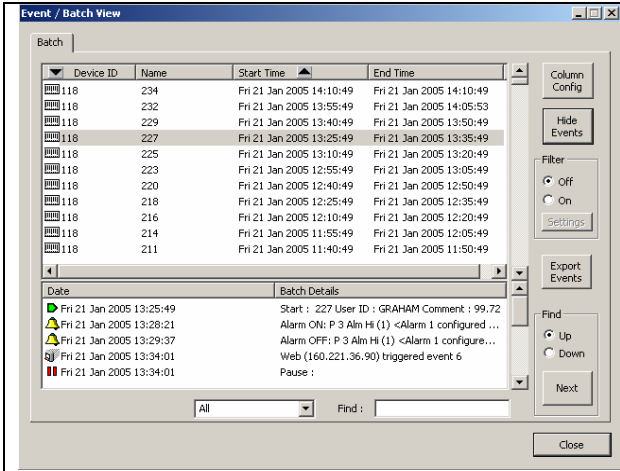
//I Roger

//C Start Event Counter <!PCE1!>

This will start batch which has a label attached to identify it as 240 Hardening Bolts for Honeywell, the User ID is Roger and a Comment indicates the start of the batch number which is controlled by an internal Recorder Event Counter

Note: This shows the commands as individual keyword commands but these could be combined into a single command, (provided the total length is less than 44 characters) as shown below:

//I Roger //C Start Event Counter <!PCE1!>



Batch Viewer in TrendManager Pro

After importing the data from the recorder, batches can be viewed using the **Event/Batch View** window. Detailed events that occurred during a selected batch can be viewed by selecting the **'Show Events'** button.

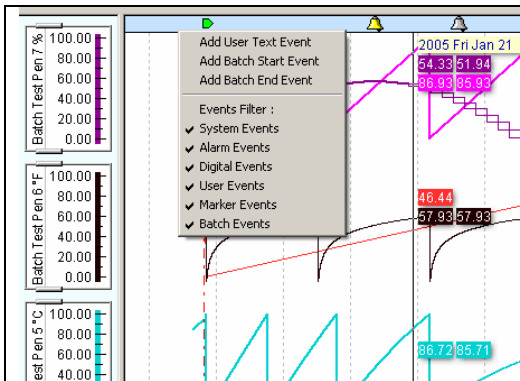
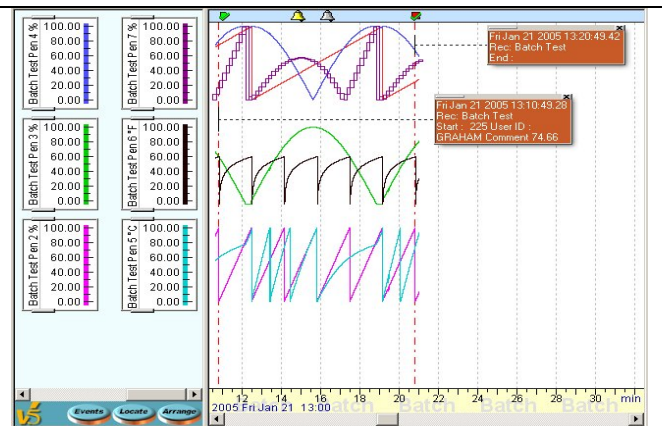
The batch data can be viewed by either dragging the Batch into the graphing pane of TrendManager Pro or by double clicking on the Batch.

In the Batch View, the user can **Search** for a particular batch using the **'Find'** or **'Filter'** tools. Searches are based on an **alphanumeric character** search or by **date/time**.

Viewing Batch Data in TrendManager Pro

Batches can be opened from the Batch Viewer either by double clicking on the batch or by dragging the batch into the graphing pane of TMP. A continuous trend that is open in TMP can be opened to show a particular batch by double clicking on the Start Batch icon in the Event Viewer Bar shown at the top of the TrendManager Pro graph.

The graph shows the start and stop of the batch as dashed vertical lines; text boxes can be opened to view additional information that was added as part of these Batch Language Keywords.



Creating Batches in TrendManager Pro

Batches can be created retrospectively by adding the Batch Language commands to an existing data file using the **'Add Batch Start Event'** & **'Add Batch End Event'** option in TrendManager Pro. The Batch Language text commands that can be done in the recorder can also be added at TMP with the **'Add User Text Event'**.

Exporting Batch Data

The export feature makes it easy to export data to an Excel spreadsheet or to send the data via e-mail. Data can be exported to the same spreadsheet or individual spreadsheets with the events included as part of the data or as its own spreadsheet. Selections are available to set the resolution of the exported data to actual resolution, graph resolution or to a user specified value. Exported Batch data includes Real Time and Elapse Time values, making comparison of different batches easy to do. All data is exported as ASCII characters (CSV Format).

