

Multitrend Plus V5 Electronic Data Recorder

03/2005
Page 1 of 13
43-TV-03-02

Specification

Function

Honeywell's Multitrend Plus V5 provides flexible, general-purpose electronic data recording in a DIN standard 144mm format recorder. The recorder accepts up to 32 universal analog inputs and stores data on removable storage media: Floppy disks, PCMCIA/Compact flash card. The large color active matrix LCD screen provides wide viewing angles along with bright, easy to read displays. The operator interface provides easy, multi-lingual access to the recorder menus for quick set up and replaying of the data.

Navigation in the menus and text entry are quick and intuitive with the use of the front thumbwheel.

Data are stored in binary encrypted format, together with the recorder configurations, in secure files.

A number of communication possibilities are offered, including an ethernet interface as standard, RS232 and RS485.

Other advanced features include; Fuzzy Logging, Custom Screen Design and advanced data security to meet 21CFR Part 11 compliance for electronic data recording.

The TrendManager Pro V5 Software Suite complements the capabilities of the recorders by providing the benefits of configuration, data analysis and data acquisition using a personal computer. It ties your process together, providing for real-time or FTP communications with the recorders through a Local Area Network (LAN) or the Internet. TrendManager Pro V5 Software Suite provides the tools for viewing real time data, data analysis, data archiving and configuration for the entire family of electronic data recorders.

Features

- **12.1" Color Active Matrix Display** — makes it easy to interpret process data and take action with the easy to understand bar charts, digital values trends or the customized display.
- **Ethernet Connectivity** - with support for various protocols provides unlimited connectivity to local area networks (LANs) or the Internet.
- **Paperless Chart Recording** — eliminates the need for paper and pens with their associated cost and mess.



Features, Continued

- **Web Server** — If the recorder is connected to a LAN, all process variables, alarms, messages, can be browsed from an internet navigator.
- **Up to 32 Analog Inputs** — up to thirty-two universal analog inputs available that can monitor process variables from a variety of sensors.
- **Data Storage** — A number of data storage options are available; these include a 1.44MB floppy, PCMCIA/Compact Flash card. In addition to this the recorder is capable of supporting dual redundant storage media for added security.
- **Standard Mounting** — fits standard cutout and allows for easy replacement of existing 180 mm paper chart recorders.
- **CE Mark** — Conformity with 73/23/EEC, Low Voltage Directive and 89/336/EEC EMC Directive.
- **Total Data Integrity** — data is stored in secure files based on pen designations making it easy to retrieve the data based on process information rather than having to remember file names.
- **Independent Display Chart Speeds and Logging rates** — logging rates can be programmed completely separate from the chart display speed, allowing the data to be displayed and stored at the rates that best suits the application.
- **Batch Mode** — Batch control markers are entered via the front of recorder, by the web page, or automatically on events including barcode reading. Using Trend Manager Pro, Batch data can be viewed, graphed and exported to a spreadsheet.
- **Logarithmic Scales** — All displayed scales can be set as linear or logarithmic.
- **Language Support** — Standard language prompts for English (US & UK), French, German, Italian, Portuguese (Braz), Spanish, Polish, Hungarian, Romanian, Slovak, Czech and Turkish.

Features, Continued

- **Universal Power** — the instrument is designed to work from 90 Vac to 250 Vac.
- **Circular chart screen** — provides a replacement to circular chart recorders.
- **Real Time Clock** — provides accurate time stamping of logged data and events and is battery backed up to prevent a loss of the clock time/date
- **Large Memory Buffer** — 8Mbyte battery backed buffer helps protect data during routine operation.
- **Password Protection** — multiple levels of password protection provided to ensure compliance with 21CFR Part 11. Up to 4 levels of password protection with up to 20 different users are available for use. The password can prevent unauthorized entry to the entire recorder configuration or just portions of the recorder configuration or operation.
- **Fuzzy Logging** — This standard feature provides a unique method to increase the storage capacity of the recorder. The data is monitored to determine changes in process data, if no changes are observed data is logged periodically. If data is changing rapidly, it is recorded normally at the programmed rate. By not logging data that is static, data compression of up to 100:1 or more can be observed, saving valuable disk space. The amount of disk space left is easily observed and can be set up as an alarm limit to provide notice when data could be lost.

Options

- **Fast scanning** - for fast processes, the signal can be sampled and recorded up to 50 times per second
- **Alarm Outputs** — up to 64 "software" alarms are easily set by users to display and record selected out-of-limit conditions. Up to 16 SPDT relays are available or up to 32 discrete outputs (24Vdc, 1A) are available to activate the user's external equipment.
- **Communications** — the recorder supports FTP, real time Trendbus, Modbus, web and e-mail over the Ethernet communications port. The recorder is also capable of Modbus RTU communications over an RS485 network. An RS232 port allows the use of an ASCII barcode reader to mark the chart or record batch specific data when used in conjunction with Event Markers.
- **Math** — A full function math package is available on the recorder. This feature can handle math expressions that can consist of expressions up to 250-characters in length.
- **Totalizers** — Each pen can be associated with a totalizer. With the use of extra pens, the totalized values can be displayed and recorded ; multiple totals can be calculated out of the same variable (weekly, monthly, etc).

Options

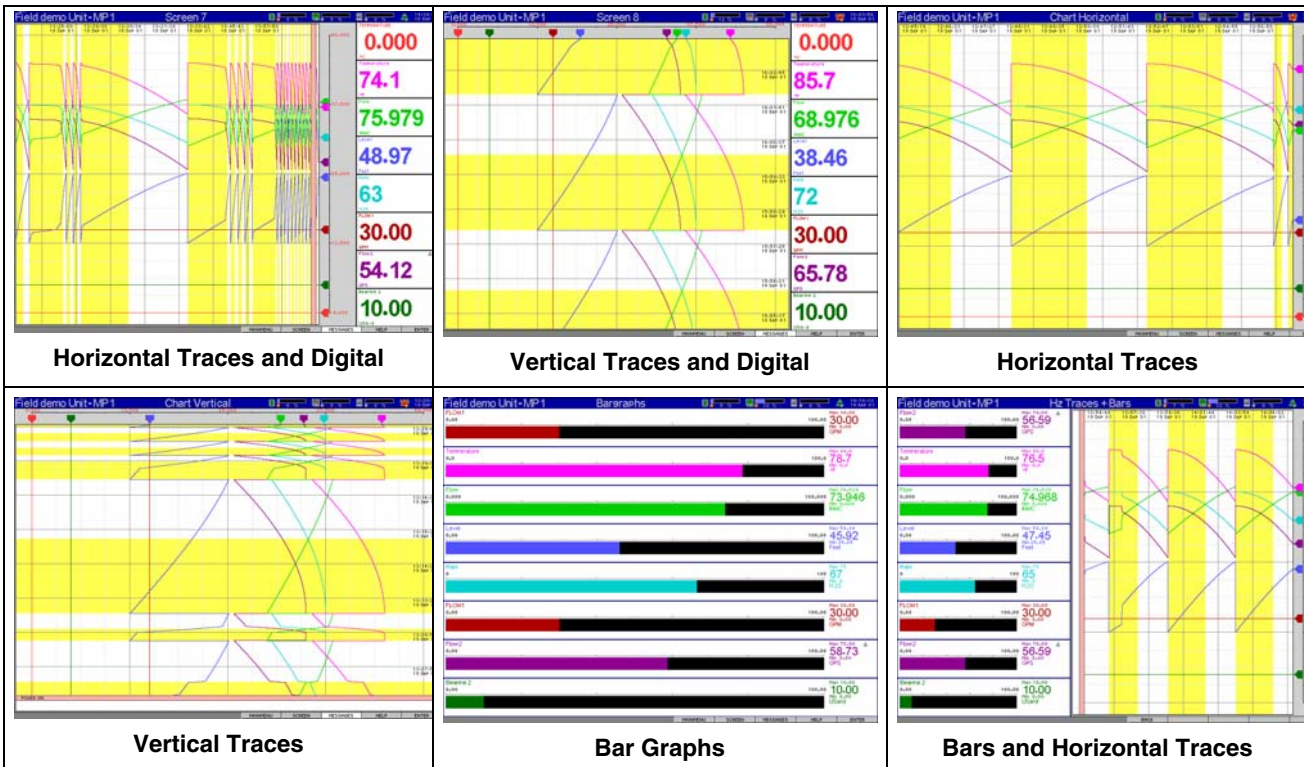
- **24Vdc instrument power** —
- **Transmitters power supply** — 24Vdc, 1 A maximum
- **Digital Input** — a number of digital input options are available. The digital inputs allow users to initiate from a remote location through a dry contact closure, selected recorder functions, such as start/stop/reset totalization, mark the chart.
- **Event Markers/Actions** — provides an easy method for a user to mark an event or message on the electronic recorder. These messages are time stamped and can be up to 43 characters long. Additionally, certain recorder actions such as start/stop recording, digital inputs actions, user key presses, etc. can also be logged. Event Markers can be used to automatically generate Batch commands.
- **Extended Security Software** — an optional software function providing extended features including entry of unique User ID's and associated passwords, timeout of password entry, password expirations, and traceability by user.
- **Validation Documentation** — Honeywell can provide the additional documentation associated with using the recorder in a validated process.

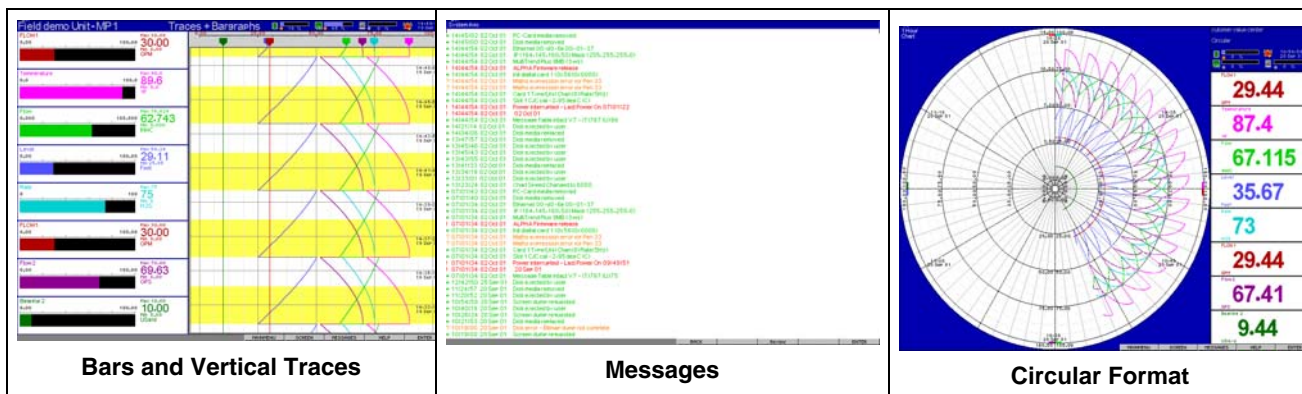
Trend Manager Pro V5

Software Suite

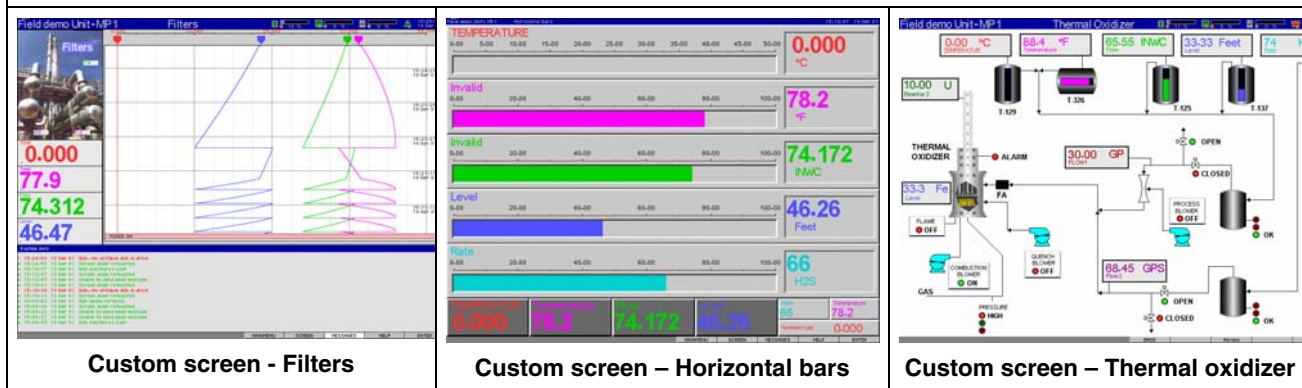
- **TrendViewer** — Standard software package for viewing, graphing, and printing stored data.
- **TrendManager Pro** — this is an advanced data analysis/archiving software package. It provides full configuration of the recorders along with e-mail set up. TrendManager Pro also allows files to be exported using comma separated variables (CSV) format.
- **TrendServer Pro** — is a fully network aware software package for communicating with the recorders. It supports all the capabilities of Trend Manager Pro plus FTP (file transfer protocol) and Web browser access. TrendServer Pro provides multi-level, multi-user access to the recorder data by various departments with security.
- **TrendServer Pro with OPC Server** — TrendServer Pro is available with an OPC server to make it easier to interface third party HMI software packages that support an OPC Client.

Standard Screens





Examples of Custom Screens Designed using Screen Designer



Specifications	
Design Attributes	
Digital Indication & Display	<p><i>Display Type:</i> Color LCD (TFT) Industrial grade with brightness adjustment and wide viewing angle <i>Screen Size:</i> 12.1" diagonal <i>Resolution:</i> SVGA (800 x 600 pixels) <i>Screen Saver:</i> Set in minutes from 1 to 255 plus brightness adjustment Digital values displayed include alarms on bars, engineering units, pen name, events including tag, time & date, 20-character description & totalized values.</p>
Display Update Rate	Display values updated every second.
Memory Status Display	A status bar, at the top of the recorder's screen, constantly displays real-time icons of memory % full and Disk % full. These percentages can be used and displayed by allocating a pen in a math expression.
Mimics & Custom Screens	Provides the ability to import custom built screens and/or bit maps from the Screen Designer software.
Other Display Contents	<p>Fully programmable display values in engineering units. Time & date stamp on every division, current time & date.</p> <p>Independent user-definable display screens and groups can be used to show a combination of pens, events, alarm summary and totalizer. Plant diagrams and mimics can be generated and then integrated into the recorder display in conjunction with traditional chart, bar graph and digital displays.</p>
Analog Display Methods	<p><i>Horizontal:</i> Thick or thin traces, with or without bar, max/min markers, major & minor divisions, time and date marked, name and description.</p> <p><i>Vertical:</i> Thick or thin traces, with or without bar, max/min markers, major & minor divisions, time and date marked, name and description</p>
Message screen	Displays system information and records any setup activity that has been changed. Provides warning and error message updates, lists alarm activity and places user defined marks on chart facility.

Specifications								
Analog Display Colors	Pen #	Color	Pen #	Color	Pen #	Color	Pen #	Color
	Pen 1	Red	Pen 9	Dark Blue	Pen 17	Purple	Pen 25	Sea Green
	Pen 2	Magenta	Pen 10	Blue/Green	Pen 18	Dark Navy	Pen 26	Maroon
	Pen 3	Green	Pen 11	Khaki	Pen 19	Forest	Pen 27	Violet
	Pen 4	Blue	Pen 12	Salmon	Pen 20	Taupe	Pen 28	Navy
	Pen 5	Cyan	Pen 13	Pink	Pen 21	Crimson	Pen 29	Fern
	Pen 6	Dark Red	Pen 14	Lime	Pen 22	Lilac	Pen 30	Olive
	Pen 7	Dark Purple	Pen 15	Light Blue	Pen 23	Mid Green	Pen 31	Bright Red
	Pen 8	Dark Green	Pen 16	Turquoise	Pen 24	Navy	Pen 32	Bright Magenta
Data Storage	<p><i>Removable Media:</i> 3.5" 1.44Mbyte floppy, PCMCIA/Compact Flash card. Compact Flash is supported by an adapter PCMCIA/Compact Flash Memory Card Interface.</p> <p>Supports dual storage media – 1.44Mbyte floppy and PCMCIA/Compact Flash interface (requires extra pens for setting up dual data storage)</p> <p><i>Internal Data Buffer:</i> 8MByte battery backed up RAM data buffer, rechargeable battery designed to retain data approximately 3 weeks if fully charged .</p> <p><i>Setup and screens:</i> Stored internally on EEPROM</p> <p><i>Manual Saving:</i> Data saving by inserting external floppy disk, PCMCIA/Compact Flash card</p> <p><i>Data Saving Period:</i> Related to log rate, number of pens, total events and alarms. Each pen is capable of its own independent storage rate.</p> <p><i>Data Format:</i> Honeywell binary encoded format</p> <p><i>Recycling Mode:</i> 8Mbyte internal memory has FIFO (First In First Out) where the newest data overwrites the oldest data.</p>							
	Set for Sample Storage		Time					
	Channels	1 Sec	10 Sec	30sec	1 Min	Media Type		
	2	4D 3H 23M	41D 7H 49M	123D 23H 27M	247D 22H 45M	1.44 MB		
		287D 23H 38M	7Y 324D 19H	23Y 244D 8H	47Y 123D 7H	100MB PCMCIA		
	4	2D 1H 41M	20D 15H 54M	61D 23H 43M	123D 23H 22M	1.44 MB		
		143D 23H 53M	3Y 344D 21H	11Y 304D 16H	23Y 244D 3H	100MB PCMCIA		
	8	1D 0H 49M	10D 7H 57M	30D 23H 51M	61D 23H 41M	1.44 MB		
		71D 23H 55M	1Y 354D 22H	5Y 344D 20H	11Y 304D 13H	100MB PCMCIA		
	12	0D 16H 31M	6D 21H 18M	20D 15H 54M	41D 7H 47M	1.44 MB		
		47D 23H 56M	1Y 114D 23H	3Y 34D 21H	7Y 324D 17H	100MB PCMCIA		
	16	0D 12H 23M	5D 3H 58M	15D 11H 55M	30D 23H 50M	1.44 MB		
		35D 23H 57M	359D 23H 29M	2Y 349D 22H	5Y 334D 18H	100MB PCMCIA		
32	0D 6H 11M	2D 1H 59M	7D 17H 57M	15D 11H 55M	1.44 MB			
	17D 23H 58M	179D 23H 44M	1Y 174D 23H	2Y 349D 22H	100MB PCMCIA			
Power Requirements	Voltage (VRMS): 90 Vac to 250 Vac (auto select). Frequency: 50/60 Hz, Power Consumption <50 VA. Optional instrument power , Voltage: 24 Vdc \pm 6Vdc. Power Consumption: < 50 watts							
Password Protection	<p>Four levels of Password protection are provided – Engineer, Supervisor, Technician, and Operator. Password protection restricts user entry to the recorder set up and specific screens.</p> <ul style="list-style-type: none"> • Engineer - Highest access to all levels, Supervisor, Technician and Operator. • Supervisor - 2nd highest level including Technician and Operator access • Technician - 3rd level including Operator access • Operator - 4th and lowest level of access. 							
Clock	<p>Calendar function, daylight savings time adjustable manually or with communications</p> <p>The time can be adjusted and synchronized using Ethernet scheduler</p> <p>Tolerance: \pm20ppm to a resolution of 1 second</p> <p>Battery backed up, Lithium battery - 10 years life (powered)</p>							
Languages	English UK, English US, French, German, Italian, Portuguese (Brazilian), Spanish, Polish, Hungarian, Turkish, Romanian, Slovak, Czech.							
Temperature units	$^{\circ}$ C, $^{\circ}$ F or K (Kelvin)							
Recorder ID	Recorder name, Screen name, Time and Date displayed at all times.							
Alarm Set Points	Up to 64 integral "soft" alarm set points easily set by user to announce selected out of limit conditions. Alarm Set points defined in Trend Manager Pro V5 Software Suite							
Events List	Enabling the user to review events logged, activate date option, filter screen to display specific events e.g. alarm activity only. Reset option available.							
Data Replay Mode	Data replay facility on chart displays at normal, fast or slow speeds. Data is replayed from the buffer with the buffered time available for replay dependant on chart speed.							

Specifications	
Batch Mode	Batch control markers can be entered via the recorder, by the web page or automatically using Events in TrendManager/Server Pro to create batches of data. Batch data can be viewed, graphed and exported to a spreadsheet. Barcodes or external keyboard inputs may be integrated in the Batch control markers.
Chart Speeds:	1 mm/hour, 5 mm/hour, 10 mm/hour, 20 mm/hour, 30 mm/hour, 60 mm/hour, 120 mm/hour, 600 mm/hour, 1200 mm/hour, 6000 mm/hour, 12000 mm/hour Chart speeds can be set independently for each chart and is independent of logging rate
CE Conformity	This product is in conformity with the protection requirements of the following European Council Directives: 73/23/EEC , the Low Voltage Directive, and 89/336/EEC , the EMC Directive. Conformity of this product with any other "CE Mark" Directive(s) shall not be assumed.
<i>Immunity</i>	Complies with EN61326
<i>Product Classification</i>	Class I: Cord Connected, Panel Mounted Industrial Control Equipment with protective earthing (grounding). (EN 61010-1)
<i>Enclosure Rating</i>	Front panel designed to IP 54 , (Optional splash proof cover designed to IP65)
<i>Installation Category (Over-voltage Category)</i>	Category II: (EN 61010-1)
<i>Emissions</i>	Complies with EN50081-1 (Ref. IEC 664-1)
<i>EMC Classification</i>	Group 1, Class A, ISM Equipment (EN 55011, emissions), Industrial Equipment (EN 61326, immunity)
<i>Safety</i>	Complies with EN61010-1: 1993. Panel Mounted Equipment, Terminals must be enclosed within the panel.
<i>Disturbances</i>	Complies with EN605555-2, EN60555-3
Seismic Qualification	Complies with IEEE 344-75 (optional)

Analog Inputs	
Number of Inputs	8, 12, 16, 24 or 32 input channels
Input Types	EMF (mV, V, mA) Thermocouple, RTD
PT100/200Ω RTD Inputs Ni 100/120Ω RTD Inputs Cu 10/Cu 53	The universal input card will access and work with all RTD, T/C and Linear input signals. The Fast Scan Input card does not accept Cu 10/CU53 Inputs and if set to RTD or T/C ranges the scan rate is 200ms or 500ms.
Minimum Input Span	Range is fully configurable with span limitation of the operating range selected with 4% under range to 4% over range capability
Input Resolution	0.0015 % (16 Bit ADC)
Input Impedance	Current loop resistance dc: 10 ohms ±5%, all other: >1 MΩ
Source Impedance	RTD: 40 ohms per lead maximum, 0.1 °C/Ω, T/C 1000• max., 0.5°C/100•
Square Root Extraction	Available as standard on every input type
Input Sampling Rate	Recorder has 4 available slots of 8 analog inputs each, the input sampling rate is dependent on actuation type. To achieve 20ms sampling all inputs for that slot must be set to linear inputs (mV,mA, V) (20msec scanning must be selected as the Fast Scanning option)
	Fast Scan Card (Linear only) 20 ms (50 Hz) (one slot - 8 inputs maximum), 200 ms (5 Hz), 500 ms (2 Hz)
	Fast Scan Card (Thermocouple/RTD) 200 ms (5 Hz), 500 ms (2 Hz)
	Universal Card 500 ms (2Hz)
Input Filter	Single Low pass filter software adjustable from 1 to 15 seconds
Linear Scales	-999999 to 999999, scale factor of 1 to 9999. Decimal Point automatic or programmable Engineering units, user definable (10 characters) First channel in Screen Layout determines the display chart scale
Logarithmic scales	1 to 9 decades
Input Isolation	Fast Scan Card -100 Vdc channel-to-channel, channel-to-ground. Universal Card – 400 Vdc channel to channel, channel to ground
Noise Rejection	Universal Card - Series mode > 60db, Common mode > 130db @120Vac
Input Sampling Method	Method: Sample, Average, Min-Max
Dielectric Strength	Power supply to ground terminal: 1350 Vac (50/60 Hz), < 1minute
Insulation Resistance	>9.9 MΩ Each terminal to ground terminal

Performance					
Accuracy - Fast Scanning Input Card					
Input Actuation (Linear)	Range		Ref. Accuracy		Temp. Stability \pm
Millivolts dc	-100 to 100		+-0.1%		0.01%/°C
Volts dc	-200 to 200		+-0.1%		0.01%/°C
Milliamps **	-1.0 to 1.0		+-0.1%		0.01%/°C
	-10 to 10		+-0.1%		0.01%/°C
	-10 to 10		+-0.2%		0.01%/°C
	-20 to 20		+-0.2%		0.01%/°C
Input Actuation (Thermocouples)	Range		Ref. Accuracy *		Temp. Stability \pm Degrees Error Per 1 Degree ΔT
	°F	°C	\pm °F	\pm °C	
C(W5)	32 to 4172	0 to 2300	10.35	5.75	0.06%/°C
E	-328 to 1832	-200 to 1000			
	-328 to 32	-200 to 0	10.8	6	0.06%/°C
	32 to 1832	0 to 1000	5.4	3	
J	-328 to 2174	-200 to 1190			
	-328 to 32	-200 to 0	8	4.5	0.03%/°C
	32 to 2174	0 to 1190	4	2.3	0.03%/°C
K	-328 to 2462	-200 to 1350			
	-328 to 32	-200 to 0	9	5	0.03%/°C
	32 to 1832	0 to 1000	4.5	2.5	0.03%/°C
	1832 to 2462	1000 to 1350	5.4	3	0.03%/°C
L	-328 to 1652	-200 to 900	5	2.75	0.03%/°C
N (Nicrosil Nisil)	-328 to 2372	-200 to 1300			
	-328 to 32	-200 to 0	2.7	1.5	0.05%/°C
	32 to 2732	0 to 1300	2.7	1.5	0.04%/°C
T	-328 to 752	-200 to 400			
	-328 to 32	-200 to 0	8	4.5	0.08%/°C
	32 to 752	0 to 400	3.6	2	0.08%/°C
W	1832 to 4172	1000 to 2300	5.9	3.25	0.15%/°C
Nickel/Cobalt	-58 to 2372	-50 to 1300	1.8	1	0.05%/°C
Chromel/Copel	-58 to 1112	-50 to 600	3.6	2	0.05%/°C
Input Actuation (RTD's)	°F	°C	\pm °F	\pm °C	
PT100 100 ohms (To BS1904)	-328 to 1202	-200 to 650	3.1	1.7	0.05%/°C
PT200 200 ohms	-328 to 356	-200 to 180	7.2	4	0.05%/°C
100 ohm Nickel	-76 to 356	-60 to 180	2.7	1.5	0.05%/°C
120 ohm Nickel	-112 to 464	-80 to 240	3.2	1.75	0.05%/°C

Reference Temperature 20°C Reference Sample Rate: 2 Hz (500msec)

Reference Humidity 65% RH \pm 15% CJC Temperature Effect: \pm 0.05°C/°C

Long term stability: 0.2%/year

* Does not include reference junction calibration of \pm 2.0 °C using the standard "ice bath" method of calibration. Factory accuracy can be improved by performing a field calibration.

** Tolerance for these input types include that of the external dropping resistors

Logging	
Logging Method	Sample, Average, Min/Max
Logging Types	Continuous, Triggered by Events, Fuzzy
Logging Rates	From 20 msec. to 4 days per pen
Fuzzy Logging	A secure data storage technique which typically delivers data compression ratio of 100:1 or more; self teaching, storing the data at a variable rate to match the process
Physical Parameters	
Enclosure	Case: Mild steel, zinc plated and passivated Bezel: 20% Glass filled Lexan
Mounting (Panel)	Flush panel mounting on a vertical plane. ± 25° from the horizontal Mounting adjustable for panel thickness of 2 mm to 100 mm Adapter kits available for covering existing panel cutouts.
Dimensions	W: 300 mm, H: 300 mm, D: 285 mm (Depth includes 40 mm recommended clearance for power cable and signal connectors as supplied). Cutout 280 x 280mm/11.02 x 11.02"
Weight	10 Kg
Color	Bezel: Black
Wiring Connections	IEC Power Plug. Removable terminal strip for input and alarm connections
Options	
Enclosure (Optional)	Splash proof cover, designed to IP65
Alarm Outputs (optional)	An alarm signal is outputted from the rear panel, via a 24-way connector, as a relay contact signal. Programmable alarm set points can be configured to activate up to 32 outputs. <i>Update rate:</i> 200 ms for all alarms <i>Number/Type:</i> <ul style="list-style-type: none"> • 4 or 8 relay contacts SPDT, 3 A, 240 Vac/dc (non-inductive, internally suppressed) • 8 I/O or 16 I/O - 1 A 24 Vdc (non-inductive, internally suppressed) <i>Activation:</i> Fully programmable internal alarm levels or rates of change. Freely assignable to any relay or discrete output
Digital I/O (optional)	8 I/O or 16 I/O - all channels may be selected freely as digital inputs or outputs 8 relays outputs card : two outputs can be converted as inputs : A digital input is provided by a volt free contact between the normally open (NO) and the common (C) terminals of an output relay.
Custom Screens & Mimics (optional)	Provides the capability in the recorder to accept custom screen designs and bit maps from the Screen Designer software. Depending on the size of the screen designs, up to 10 screens can be loaded into the recorder memory.
Event Marker (optional)	User defined process events are recorded and can be set to cause particular recorder actions. Events can consist of recording start/stop, digital inputs, alarms, totalizing actions, timers, barcode, etc. Once an event has been caused it can produce a definable set of effects on the recorder which can include, mark on chart, relay outputs, recording control, counters, totalizing actions, triggering other event with a configurable delay. Each event marker can be recorded for analysis using the TrendManager Software Suite. Event Markers are required when using the RS232 port to input bar codes or ASCII messages. Event markers can be used to automatically generate Batch commands.
Transmitter Power (Optional)	1 Amp @ 24 Vdc ± 3 Vdc.
Communication boards (4 options)	<ul style="list-style-type: none"> - RS-485 supporting Trendbus Real time protocol only ; Trendbus is used in conjunction with TrendServer Pro - Ethernet 10 Base–T with RJ45 connector supporting Real time Trendbus, Modbus, FTP protocol, Internet, e-mail - Ethernet 10 Base –T with RJ45 connector/RS485 Trendbus/RS232 ASCII – Ethernet support Real time Trendbus, Modbus, FTP protocol, Internet, e-mail, RS232 supports bar code input (Event Marker option required to enter bar code messages) ; RS485 supports Trendbus protocol only ; Trendbus is used in conjunction with TrendServer Pro - RS485 (4-wire) supporting Modbus RTU protocol

Analog Outputs (Re-transmission) (Optional)	2, 4, 6 or 8 re-transmission outputs available; each output is driven by a pen. Analog inputs, totalized values or any mathematical result can be re-transmitted <i>Update Rate:</i> 200 msec all channels <i>Type:</i> 4 mA to 20 mA <i>Resolution:</i> 0.0015% <i>Accuracy:</i> ±0.25 % <i>Maximum Load Resistance:</i> 500 <i>Isolation:</i> 300 Vdc			
Totalizers (optional)	One totalizer per input. Totalizer value must be assigned to a pen for display and storage. Multiple totalizations are possible with the use on the extra pens (option). Reset may be manual or programmed (Event markers option necessary). Totalization values are ten digits plus exponent.			
Sterilisation (Optional)	Each pen can be totalized according to the Fo function at 250 °F (121°C). Total for completion, start temperature and z factor are adjustable.			
Extended Security (Optional)	Provides full support for 21 CFR Part 11. Includes features for entry of unique User ID's and associated passwords, timeout on inactivity (1 to 10 min.), password expiration (1 to 190 days), up to 20 users, password re-entry lock out for incorrect entry of password more than 3 times, no re-use of passwords (programmable 4 to 12 times), traceability by user name			
Math Algorithms (Optional)	All analog input channels have a math expression block. This is a fully user programmable 250 character free form math expression for each pen. Math calculations available on all pens, with 16 extra pens (option 32 pens). Standard Math includes Add, Subtract, Multiply, and Divide.			
	Math Expressions			
Math Functions (Optional)	Square	Square root	Modulus	Log
	LN (natural log)	Lowest	Highest	Round
	Reciprocal	Absolute	Totalized	Over
	Under	Inside	Outside	SIN
	COS	TAN	°F to °C	°C to °F
	Rolling Average	Delay	Index Analog	Index Digitals
	Index Relay Output	Evaluate	Exponential	Floor
	Ceiling	Cold Junction Comp.	Counter Alarms	Counter Digital
	Counter Events	Counter User	Root	Power
	ACOS	ASIN	ATAN	SINH
	COSH	TANH	ASINH	ACOSH
	ATANH	AL (Alarm Status)		
Agency Approval	CE Mark Standard, CSA (Optional) Certificate Number L101284, UL (Optional) File # 201698			
Miscellaneous	Customer ID Tagging (3 lines of up to 22 characters each line)			
Environmental and Operating Conditions				
Parameter	Reference	Rated	Extreme	Transport and storage
Ambient Temperature	67 °F to 77 °F 19 °C to 25 °C	58 °F to 104 °F 15 °C to 40 °C	32 °F to 122 °F 0 °C to 50 °C 0°C to 40°C (Floppy)	-14 °F to 140 °F -10 °C to 60 °C
Relative Humidity (%RH)	50 to 65*	10 to 90*	5 to 90*	5 to 95*
Vibration				
Frequency (Hz)	0	0 to 70	0 to 100	0 to 100
Acceleration (g)	0	0.1	0.2	0.5
Mechanical Shock				
Acceleration (g)	0	1	5	20
Duration (ms)	0	30	30	30
Mounting Position from Vertical				
Tilted Forward	5°	20°	25°	Any
Tilted Backward	5°	20°	25°	Any
Tilted to Side (±)	5°	20°	25°	Any
Power Requirements				
Voltage (VRMS)	119 to 121	90 to 250	90 to 250	N/A
Frequency (Hz)	49.8 to 60.2	47 to 440	47 to 440	N/A
Power Consumption	50 VA maximum			
Warm Up	30 minutes minimum			

* The maximum rating only applies up to 104°F (40°C). For higher temperatures, the RH specification is de-rated to maintain constant moisture content.

Application Software – TrendManager V5 Software Suite

TrendViewer software is available at no charge when ordering any recorder; it allows the user to view, graph and print data.

TrendManager Pro is a stand-alone package that delivers to the user total recorder configuration, simulates the recorder's performance on the PC, and archives, graphs, prints and exports data. Full data graphing, archiving and export tools are included.

Minimum System requirements for TrendViewer and TrendManager Pro:

- 200 MHz Pentium processor or higher
- 3.5" Floppy disk drive
- CD-ROM drive
- Monitor recommended screen resolution 800 x 600 minimum requirement, high color
- Windows 98SE, 2000, ME, XP, NT ver. 4.0 with Service pack 6, onwards
- 32 Mbyte of RAM (64 Mbyte recommended)
- 10 Mbyte free hard disk space
- A mouse

TrendServer Pro is a fully network aware package, which allows data viewing, archiving and communications. The recorder uses an RS485 network

or can access them directly with the recorder's own Ethernet TCP/IP port. Standard kit includes data archive tools plus E-mail, graph, print import and export data facilities.

Minimum System requirements for TrendServer:

- 450 MHz Pentium processor or higher
- CD-ROM drive
- Monitor recommended screen resolution 1024 x 768 minimum requirement, high color
- 2 Gbyte Hard-drive free disk space
- Windows 98SE, 2000, ME, XP, NT ver. 4.0 with Service pack 6, onwards
- 64 Mbyte of RAM
- TCP IP installed
- A mouse

TrendServer Pro with OPC Server provides the same functions as the TrendServer Pro but includes the added function of an integrated OPC Server to allow easy interfacing to third party HMI software packages that support an OPC Client. This provides a real-time interface between servers and clients.

Screen Designer enables the customers to design unique display layouts for transfer to the recorder's screen. Screen layouts can be created using any combination of indicators such as trending Charts, Digital Panel Meters (DPM), Bar graphs, Bitmaps, Digital pictures and Plant diagrams. Flexibility allows each type of indicator to have elements of its appearance changed to create an individual presentation.

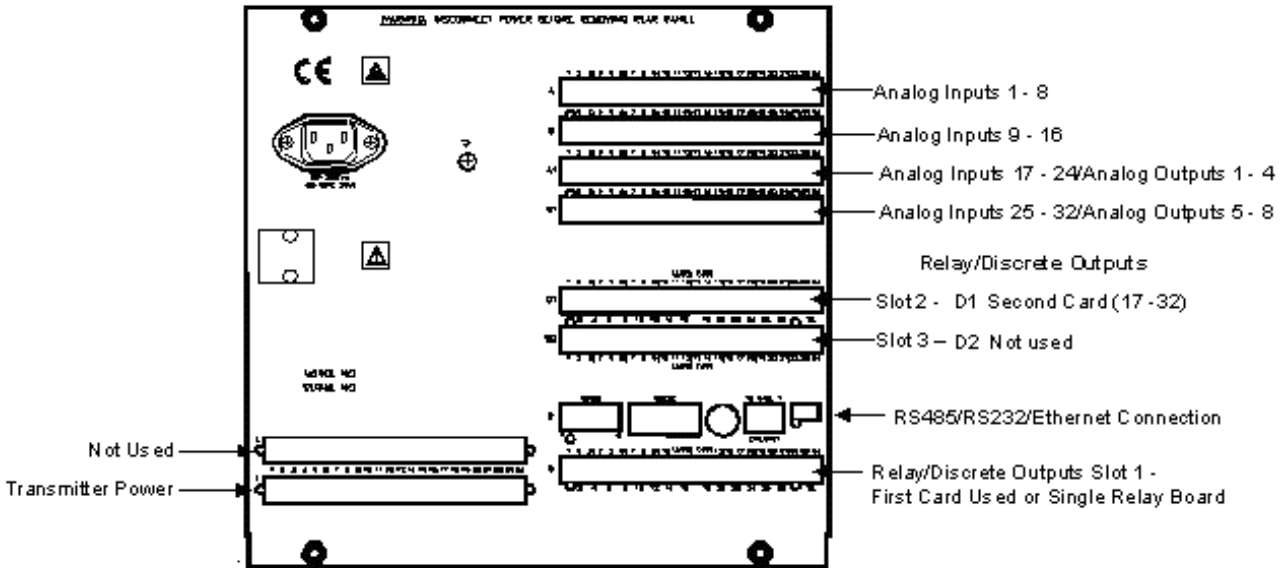
The **Screen Designer** software design package is compatible with **Minitrend V5** and **Multitrend Plus V5** recorders allowing layouts to be transferred on to single or multiple recorders. This contributes to continuity and standardization of process data.

Minimum System requirements for Screen Designer:

- 200 MHz Pentium processor or higher
- 3.5" Floppy disk drive
- CD-ROM drive
- Windows 98SE, 2000, ME, XP, NT ver. 4.0 with Service pack 6, onwards
- 32 Mbytes of RAM (64 Mbytes recommended)
- 16 bit color graphics (24 bit recommended)
- 10 Mbytes free hard disk space
- A mouse

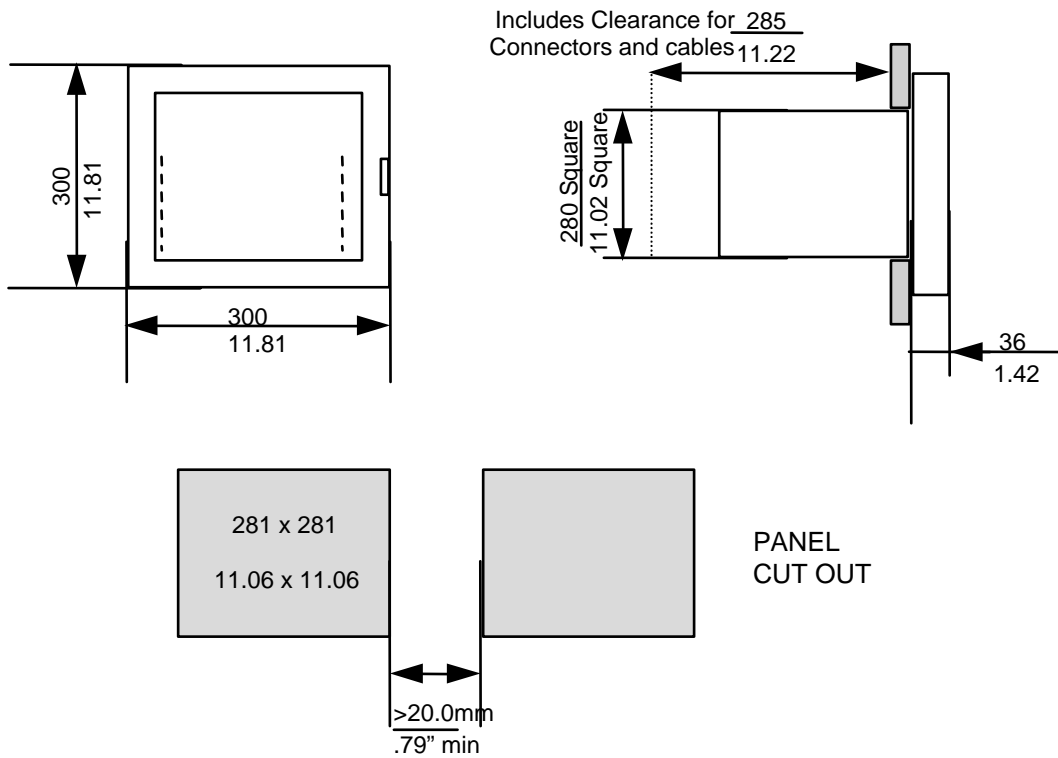
Comparison of Features Supported by Each Application Software Package

Features	Trend Viewer	Trend Manager	Trend Server
Import data from disk	*	*	*
Graph data	*	*	*
Upgrades available via download (www.trendview.com)	*	*	*
Print graph data	*	*	*
Print recorder configurations	*	*
Full Configuration of any recorder on PC	*	*
Fuzzy logging	*	*
Events System	*	*
Archive data on secure databases	*	*
Export using CSV format	*	*
Batch Mode	*	*
Export using OPC links	*
Communicate with up to 256 recorders on RS485	*
Communicate with recorders using Ethernet TCP/IP	*
Distribute recorder data over plant-wide LAN	*
FTP and Real time Ethernet connection	*
Password protection	*
Send setup to recorder via Ethernet	*
Audit trail manager	*
Web browse a recorder – web browser only required	*



90 – 250 Vac Rear Panel AC power is connected via the standard configuration IEC chassis plug on the rear panel

Multitrend Plus Recorder Back panel Layout



Multitrend Plus Recorder Dimension Layout

Sales and Service

For application assistance, current specifications, pricing, or name of the nearest Authorized Distributor, contact one of the offices below.

Warranty/Remedy

Honeywell warrants goods of its manufacture as being free of defective materials and faulty workmanship. Contact your local sales office for warranty information. If warranted goods are returned to Honeywell during the period of coverage, Honeywell will repair or replace without charge those items it finds defective. **The foregoing is Buyer's sole remedy and is in lieu of all other warranties, expressed or implied, including those of merchantability and fitness for a particular purpose.** Specifications may change without notice. The information we supply is believed to be accurate and reliable as of printing. However, we assume no responsibility for its use. While we provide application assistance personally, through our literature and the Honeywell website, it is up to the customer to determine the suitability of the product in the application. © Copyright 2004 - 2005. Honeywell International Inc. All rights reserved.

ASIA PACIFIC

Australia

Honeywell Limited
Phone: +(61) 2-9370-4500
FAX: +(61) 2-9370-4525

Beijing

Honeywell (Tianjin) Ltd
Phone: +(86-10) 8458-3280
Fax: +(86-10) 8458-3103

Shanghai

Honeywell (Tianjin) Ltd
Phone: (86-21) 6237-0237
Fax: (86-21) 6237-0775

Hong Kong S.A.R.

Honeywell Ltd.
Phone: +(852) 2953-6412
Fax: +(852) 2953-6767

Chengdu

Honeywell China Inc.
Phone: +(86-28) 8678-6348
Fax: +(86-28) 8678-7061

Guangzhou

Honeywell China Inc.
Phone: +(86-20) 3879-1169
Fax: +(86-20) 3879-1269

Shenzhen

Honeywell China Inc.
Phone: +(86) 755-2518-1226
Fax: +(86) 755-2518-1221

Indonesia

PT Honeywell Indonesia
Phone: +(62) 21-535-8833
Fax: +(62) 21-536-71008

India

TATA Honeywell Ltd.
Phone: +(91) 20 687 0445/0446
Fax: +(91) 20 681 2243/687 5992

Japan

Honeywell Inc
Phone: +(81) 3 5440 1425
Fax: +(81) 3 5440 1368

South Korea

Honeywell Co., Ltd
Phone: +(82) 2 799-6146
Fax: +(82) 2 792-9013

Malaysia

Honeywell Engineering Sdn Bhd
Phone: +(60-3) 7958-4988
Fax: +(60-3) 7958-8922

New Zealand

Honeywell Limited
Phone: +(64-9) 623-5050
Fax: +(64-9) 623-5060

Philippines

Honeywell Systems (Philippines) Inc.
Phone: +(63-2) 633-2830
Fax: +(63-2) 638-4013

Singapore

Honeywell Pte Ltd
Phone: +(65) 6355-2828
Fax: +(65) 6445-3033

Thailand

Honeywell Systems (Thailand) Ltd.
Phone: +(662) 693-3099
FAX: +(662) 693-3085

Taiwan R.O.C.

Honeywell Taiwan Ltd.
Phone: +(886-2) 2245-1000
FAX: +(886-2) 2245-3242

LATIN AMERICA

Argentina

Honeywell S.A.I.C.
Phone: +(54-11) 4383-3637
FAX: +(54-11) 4325-6470

Brazil

Honeywell do Brasil & Cia
Phone: +(55-11) 7266-1900
FAX: +(55-11) 7266-1905

Chile

Honeywell Chile, S.A.
Phone: +(56-2) 233-0688
FAX: +(56-2) 231-6679

Mexico

Honeywell S.A. de C.V.
Phone: +(52) 55 5259-1966
FAX: +(52) 55 5570-2985

Puerto Rico

Honeywell Inc.
Phone: +(809) 792-7075
FAX: +(809) 792-0053

Trinidad

Honeywell Inc
Phone: +(868) 624-3964
FAX: +(868) 624-3969

Venezuela

Honeywell CA
Phone: +(58-2) 238-0211
FAX: +(58-2) 238-3391

NORTH AMERICA

Canada

Honeywell LTD
Phone: 1-800-737-3360
FAX: 1-800-565-4130

USA

Honeywell Control Products, International Headquarters
Phone: 1-800-537-6945
1-815-235-6847
FAX: 1-815-235-6545
E-mail: info.sc@honeywell.com

EUROPE

Austria

Honeywell Austria Ges.m.b.H.
Phone: +43 (1) 727 80 - 0
Fax: +43 (1) 727 80 - 8

Balkan Countries

Please contact the Honeywell Italian office

Belgium

Honeywell SA/NV
Phone: +32(0)27282776
FAX: +32(0)27282329

Bulgaria

Honeywell EOOD
Phone: +359 29790017 & ext /18 /23 /26
FAX: +35-929 790024 & +359 29713213

Czech Republic

Honeywell spol. s.r.o.
Phone: +420 242442205
FAX: +420 242442131

Denmark

Honeywell A/S
Phone: +(45) 39 55 55 55
FAX: +(45) 39 55 55 58

Finland

Honeywell OY
Phone: +358 (3) 2727625
FAX: +358 (3) 2728600

France

Honeywell SA
Phone: +33 (0)1 60198075
FAX: +33 (0)1 60198201

Germany

Honeywell GmbH
Phone: +49 (69)8064299
FAX: +49 (69)8064931

Hungary

Honeywell Kft.
Phone: +36-1-451 4335
FAX: +36-1-451 4343

Italy

Honeywell S.p.A.
Phone: +39 02 9214 6347
FAX: +39 0292146377

The Netherlands

Honeywell B.V.
Phone: +31(0)205656200
FAX: +31(0)205656210

Norway

Honeywell A/S
Phone: +47 66762000
FAX: +47 66762090

Poland

Honeywell Sp. zo.o
Phone: +48-22-6060900
FAX: +48-22-6060901

Portugal

Honeywell Portugal S.A.
Phone: +351 21 424 5000
FAX: +351 21 424 50 99

Romania

Honeywell Bucharest
Phone: 0040212316437 & 0040212316438
FAX: 0040212316439

Russia and Commonwealth of Independent States (CIS)

Z.A.O. Honeywell, Moscow
Phone: +(7 095) 796 98 00/81
FAX: +(7 095) 796 98 93/94

Slovak Republic

Honeywell s.r.o.
Phone: +421-2-58247 400
FAX: +421-2-58247 415

Spain

Honeywell S.A.
Phone: +34 (0)91313 61 00
FAX: +34 (0)91313 62 78

Sweden

Honeywell AB
Phone: +(46) 8 775 55 00
FAX: +(46) 8 775 56 00

Switzerland

Honeywell AG
Phone: +41 (1) 855 24 24
FAX: +41 (1) 855 24 25

Turkey

Honeywell Turkey A.S.
Phone: +90 216 575 6600
FAX: +90 216 575 6637

United Kingdom

Honeywell Control Systems Ltd
Phone: +(44) 1344 655251
FAX: +(44) 1344 655554

Ukraine

Honeywell
Phone: 38-044 201 4474
Fax: 38-044 201 4475

AFRICA

South Africa (Republic of)

Honeywell Southern Africa
Honeywell S.A. Pty. Ltd
Phone: +27 11 6958000
FAX: +27 118051504

English Speaking Africa

Please contact the Honeywell South African office.

French Speaking Africa

Please contact the Honeywell French office in EUROPE

MIDDLE EAST

Abu Dhabi U A E

Middle East Headquarters
Honeywell Middle East Ltd
Phone: +971 24432119
FAX: +971 24432536

Sultanate of Oman

Honeywell & Co Oman LLC
Phone: +968 701397
FAX: +968 787351

Egypt

Honeywell Egypt Ltd
Phone: +202 6905516 & ext. /17 /18 /19
FAX : +202 6905523

Saudia Arabia

Honeywell Turki Arabia Limited
Phone: +966-3-341-0140
Fax: +966-3-341-0216

Kuwait

Honeywell Kuwait KSC
Phone: +965 2421327
Fax: +965 2428315

Qatar

Honeywell Middle East
Phone: 974-4837768/9
Fax: 974-4837765

Honeywell

Honeywell Process Solutions

2500 W. Union Hills Drive
Phoenix, AZ 85027